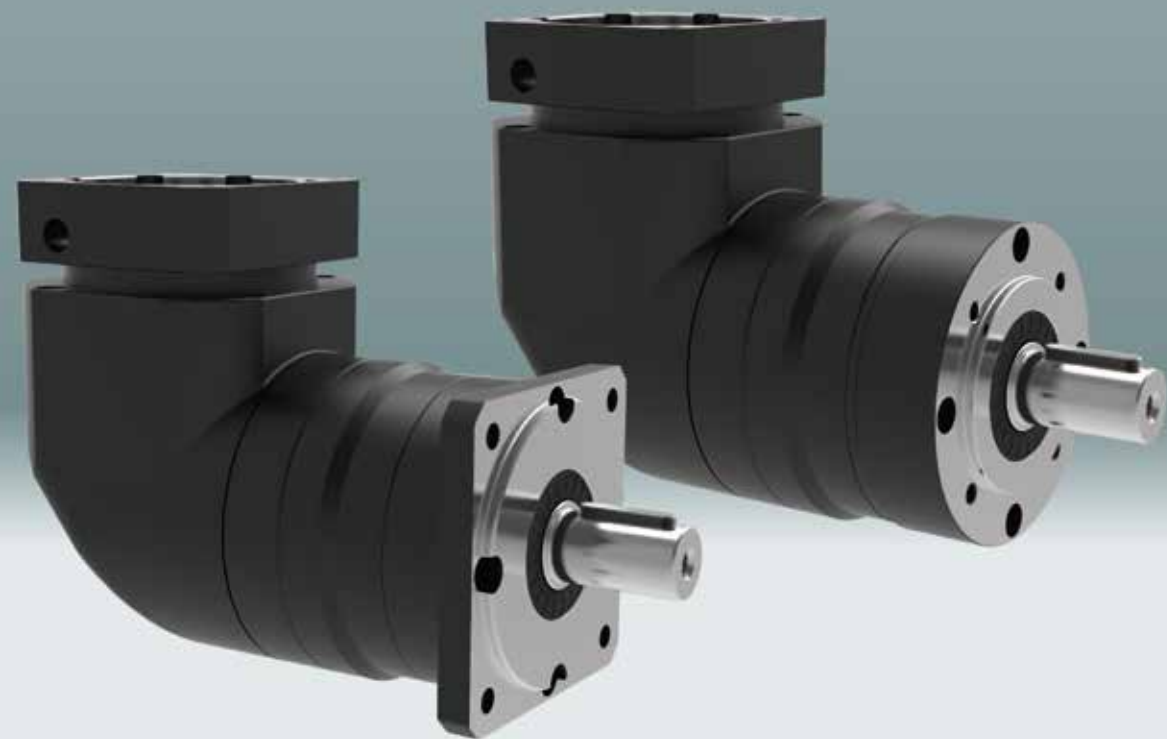
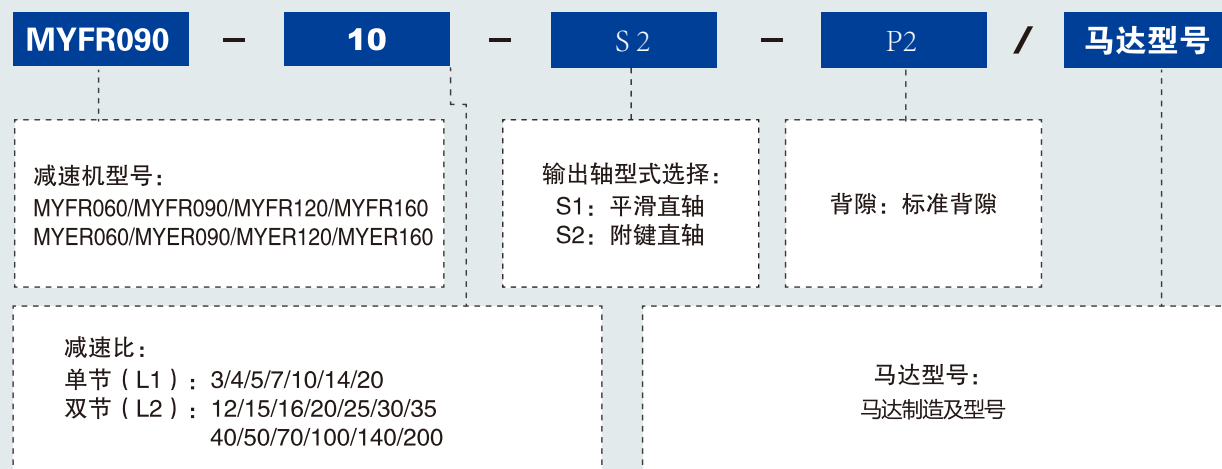


MYFR/MYER SERIES

精密行星减速机



型号说明 MODEL ILLUMINATE



选型范例: MYFR090-10-S2-P2/MHMD-082G1U

创新 + 质量 + 服务

性能 -MYFR 减速机

规格	单位	节数	减速比 ¹	MYFR060 MYER060	MYFR090 MYER090	MYFR120 MYER120	MYFR160 MYER160
额定输出力矩 T_{2N}	Nm	单级 L1	3	27	96	161	423
			4	40	122	210	364
			5	40	122	210	423
			7	34	95	170	358
			10	16	56	86	210
		双级 L2	12	27	96	161	423
			15	27	96	161	423
			16	40	122	210	364
			20	40	122	210	364
			25	40	122	210	423
			35	40	122	210	423
			40	40	122	210	423
			50	40	122	210	423
			70	34	95	170	423
100	16	56	86	210			
紧急制动力矩 T_{2B}	Nm	L1,L2	3~100	3倍额定输出力矩			
额定输入转速 N_1	rpm	L1,L2	3~100	4000	3000	3000	3000
最大输入转速 n_{1B}	rpm	L1,L2	3~100	8000	6000	6000	6000
回程间隙	arcmin	L1	3~10	≤ 15	≤ 15	≤ 15	≤ 15
		L2	12~100	≤ 20	≤ 20	≤ 20	≤ 20
扭转刚性	Nm/arcmin	L1,L2	3~100	1.8	4.85	11	65.5
容许径向力 F_{2rB} ²	N	L1,L2	3~100	240	450	1240	6520
容许轴向力 F_{2aB} ²	N	L1,L2	3~100	220	430	1000	3260
使用寿命	hr	L1,L2	3~100	20000 ³			
效率 η	%	L1	3~10	≥ 96%			
		L2	12~100	≥ 94%			
重量	kg	L1	3~10	0.93	2.35	6.15	18.2
		L2	12~100	1.15	2.70	8.00	24.9
使用温度	°C	L1,L2	3~100	-10°C ~ +90°C			
润滑		L1,L2	3~100	合成润滑油			
防护等级		L1,L2	3~100	IP65			
安装方式		L1,L2	3~100	任意方向			
噪音值 ($n_1=3000$ rpm)	dB	L1,L2	3~100	≤ 65	≤ 68	≤ 70	≤ 70

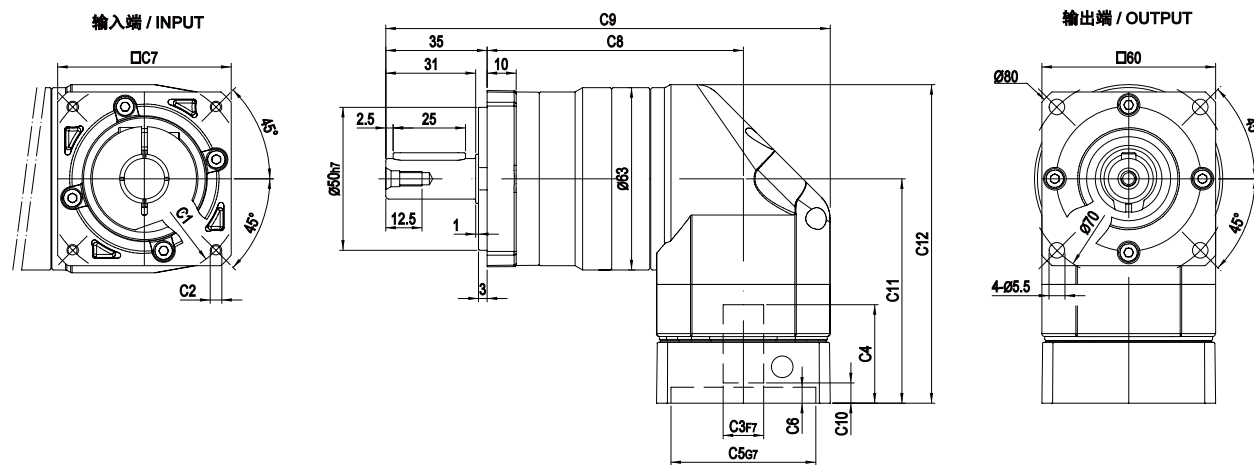
惯量 -MYFR 减速机

规格	单位	节数	减速比 ¹	MYFR060 MYER060	MYFR090 MYER090	MYFR120 MYER120	MYFR160 MYER160
转动惯量 J_i	kg·cm ²	L1	3	0.46	1.73	12.78	36.72
			4	0.46	1.73	12.78	34.63
			5	0.46	1.73	12.78	34.24
			7	0.41	1.42	11.38	34.07
			10	0.41	1.42	11.38	34.02
		L2	12	0.44	1.49	12.18	34.24
			15	0.44	1.49	12.18	34.24
			16	0.44	1.49	12.18	34.24
			20	0.44	1.49	12.18	34.24
			25	0.44	1.49	12.18	34.24
			35	0.44	1.49	12.18	34.24
			40	0.44	1.49	12.18	34.02
			50	0.34	1.25	11.48	34.02
			70	0.34	1.25	11.48	34.02
100	0.34	1.25	11.48	34.02			

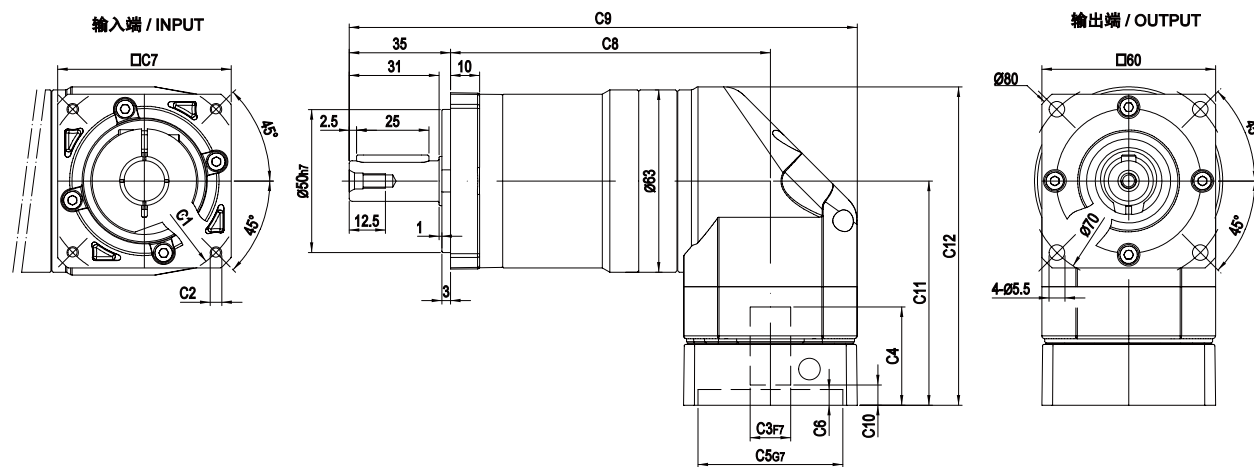
1. 减速比 ($i=N_1/N_{out}$)
 2. 输出转速 100rpm 时, 作用于输出轴中心位置
 3. 连续运转降低使用寿命二分之一

外形尺寸图 / OUTLINE DIMENSION SHEET

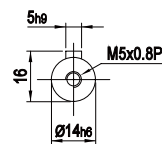
MYFR-060-L1



MYFR-060-L2



输出轴径 / Output Diameter

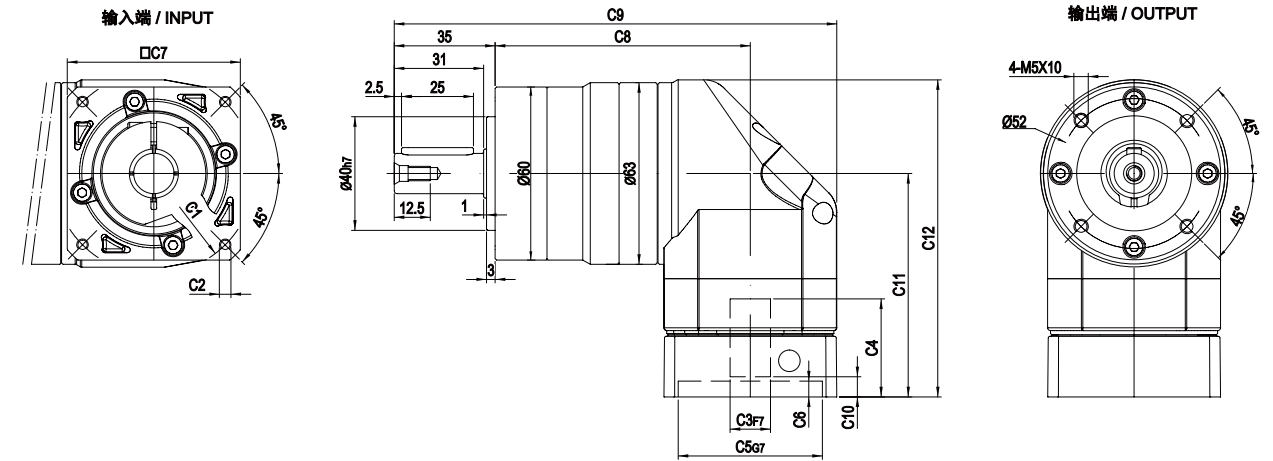


尺寸	C1	C2	C3	C4	C5	C6	C7	C8	C9	C10	C11	C12
MYFR-060-L1	Ø66.7	4-M4x12	Ø8	33	Ø38.1	5.5	60	88.5	153.5	7	77.5	110
	Ø70	4-M4x12, 4-M5x12	Ø11, Ø14	33	Ø50	5.5	60	88.5	153.5	7	77.5	110
	Ø90	4-M5x15, 4-M6x15	Ø19	42	Ø70	7	80	88.5	163.5	9	87	119.5
MYFR-060-L2	Ø66.7	4-M4x12	Ø8	33	Ø38.1	5.5	60	110.5	175.5	7	77.5	110
	Ø70	4-M4x12, 4-M5x12	Ø11, Ø14	33	Ø50	5.5	60	110.5	175.5	7	77.5	110
	Ø90	4-M5x15, 4-M6x15	Ø19	42	Ø70	7	80	110.5	185.5	9	87	119.5

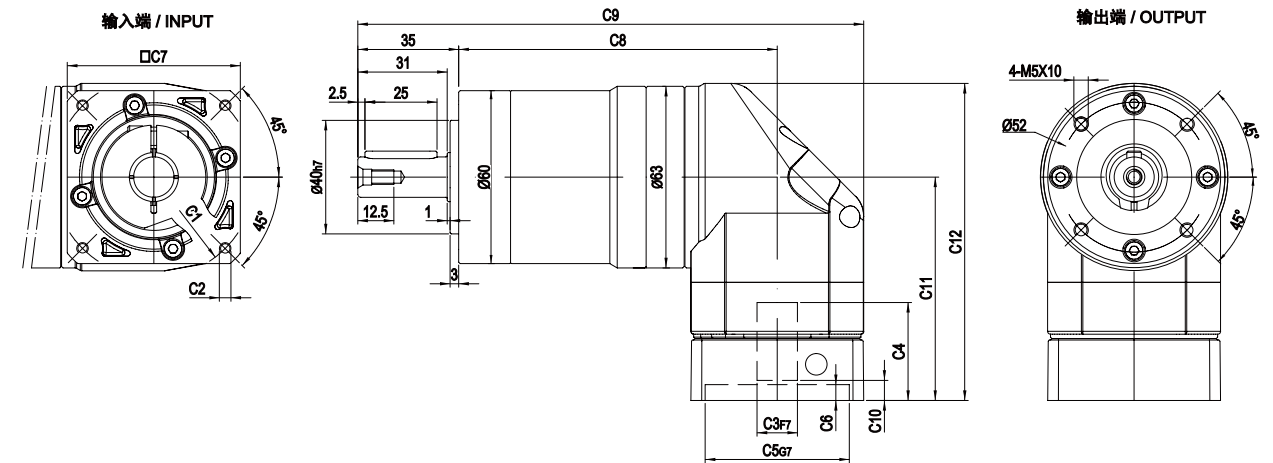
* C1~C7是公制标准马达连接板之尺寸, 可根据客户要求单独定做。
* C1~C7 are motor (metric standard) specific dimensions, which could be customised.

外形尺寸图 / OUTLINE DIMENSION SHEET

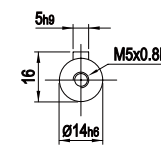
MYER-060-L1



MYER-060-L2



输出轴径 / Output Diameter

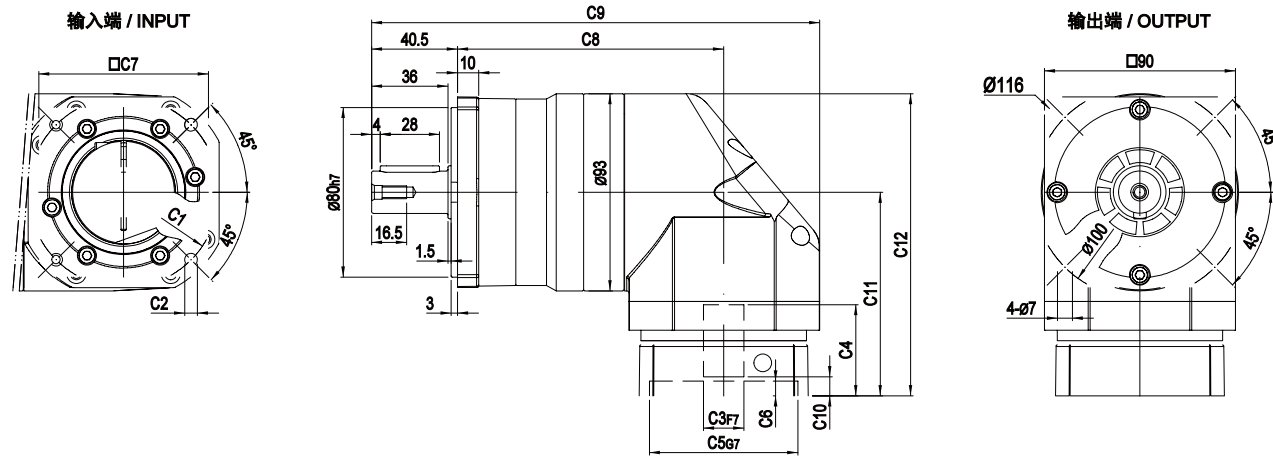


尺寸	C1	C2	C3	C4	C5	C6	C7	C8	C9	C10	C11	C12
MYER-060-L1	Ø66.7	4-M4x12	Ø8	33	Ø38.1	5.5	60	88.5	153.5	7	77.5	110
	Ø70	4-M4x12, 4-M5x12	Ø11, Ø14	33	Ø50	5.5	60	88.5	153.5	7	77.5	110
	Ø90	4-M5x15, 4-M6x15	Ø19	42	Ø70	7	80	88.5	163.5	9	87	119.5
MYER-060-L2	Ø66.7	4-M4x12	Ø8	33	Ø38.1	5.5	60	110.5	175.5	7	77.5	110
	Ø70	4-M4x12, 4-M5x12	Ø11, Ø14	33	Ø50	5.5	60	110.5	175.5	7	77.5	110
	Ø90	4-M5x15, 4-M6x15	Ø19	42	Ø70	7	80	110.5	185.5	9	87	119.5

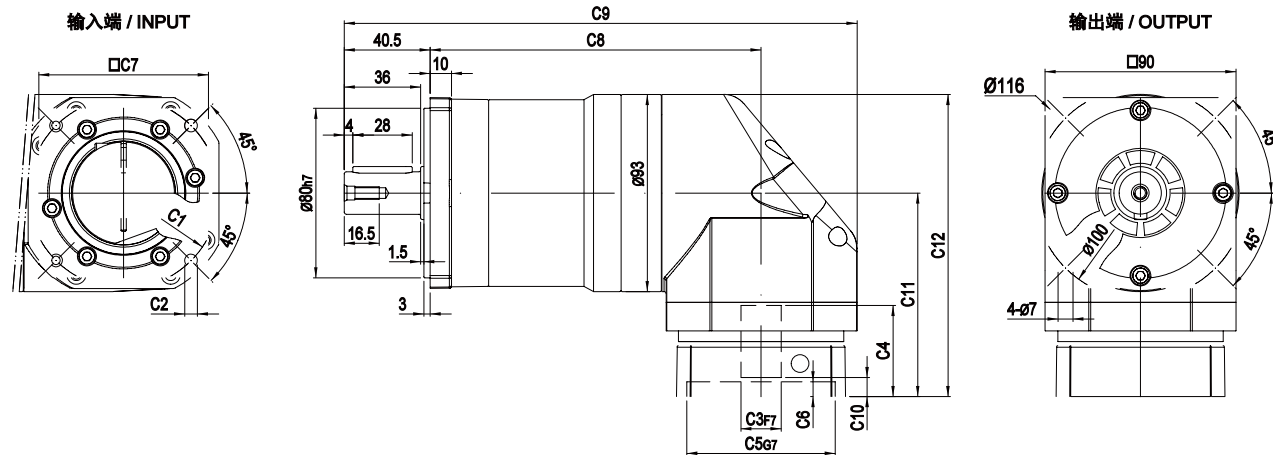
* C1~C7是公制标准马达连接板之尺寸, 可根据客户要求单独定做。
* C1~C7 are motor (metric standard) specific dimensions, which could be customised.

外形尺寸图 / OUTLINE DIMENSION SHEET

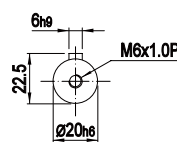
MYFR-090-L1



MYFR-090-L2



输出轴径 / Output Diameter

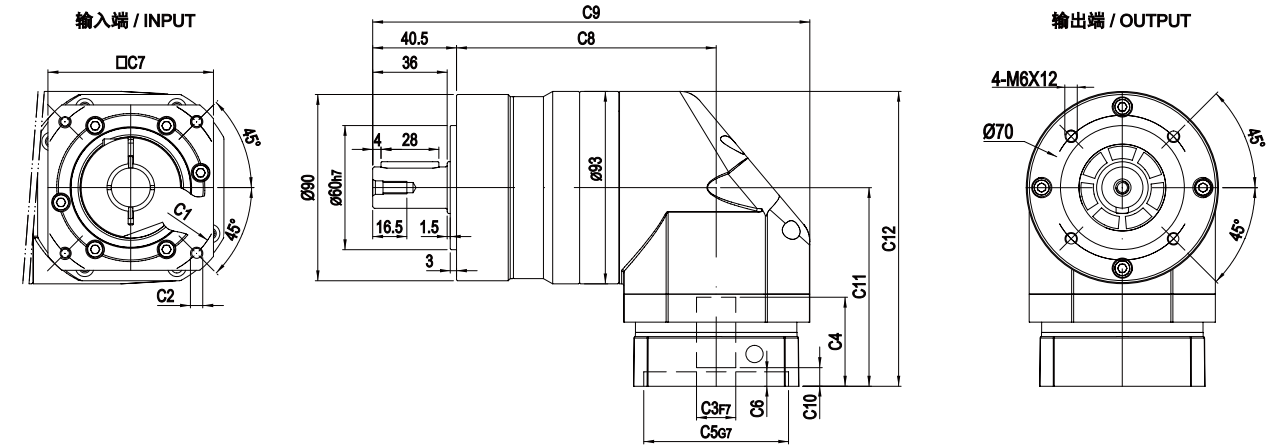


尺寸	C1	C2	C3	C4	C5	C6	C7	C8	C9	C10	C11	C12
MYFR-090-L1	$\varnothing 90$	4-M5x15, 4-M6x15	$\varnothing 19$	44	$\varnothing 70$	7	80	125.5	211	9	96	142.5
	$\varnothing 100$	4-M6x15	$\varnothing 16, \varnothing 19$	44	$\varnothing 80$	7	86	125.5	211	9	96	142.5
	$\varnothing 115$	4-M8x20	$\varnothing 19, \varnothing 22, \varnothing 24$	56.5	$\varnothing 95$	10	100	125.5	216	17.5	108.5	155
	$\varnothing 145$	4-M8x20	$\varnothing 19, \varnothing 22, \varnothing 24$	60	$\varnothing 110$	8	130	125.5	231	21	112	158.5
MYFR-090-L2	$\varnothing 90$	4-M5x15, 4-M6x15	$\varnothing 19$	44	$\varnothing 70$	7	80	156	241.5	9	96	142.5
	$\varnothing 100$	4-M6x15	$\varnothing 16, \varnothing 19$	44	$\varnothing 80$	7	86	156	241.5	9	96	142.5
	$\varnothing 115$	4-M8x20	$\varnothing 19, \varnothing 22, \varnothing 24$	56.5	$\varnothing 95$	10	100	156	246.5	17.5	108.5	155
	$\varnothing 145$	4-M8x20	$\varnothing 19, \varnothing 22, \varnothing 24$	60	$\varnothing 110$	8	130	156	261.5	21	112	158.5

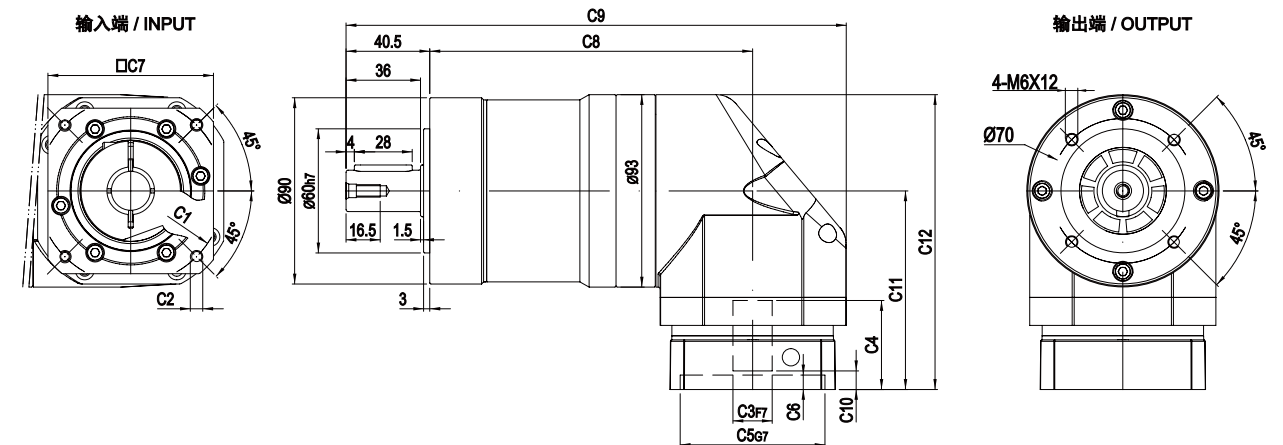
* C1-C7是公制标准马达连接板之尺寸, 可根据客户要求单独定做。
* C1-C7 are motor (metric standard) specific dimensions, which could be customised.

外形尺寸图 / OUTLINE DIMENSION SHEET

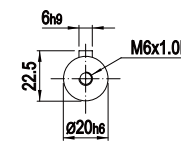
MYER-090-L1



MYER-090-L2



输出轴径 / Output Diameter

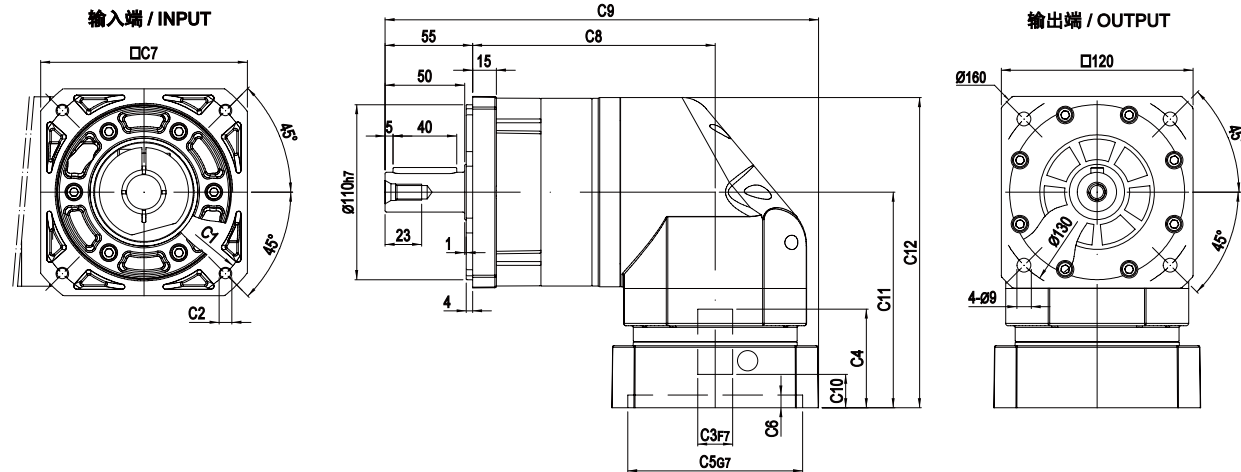


尺寸	C1	C2	C3	C4	C5	C6	C7	C8	C9	C10	C11	C12
MYER-090-L1	$\varnothing 90$	4-M5x15, 4-M6x15	$\varnothing 19$	44	$\varnothing 70$	7	80	125.5	211	9	96	142.5
	$\varnothing 100$	4-M6x15	$\varnothing 16, \varnothing 19$	44	$\varnothing 80$	7	86	125.5	211	9	96	142.5
	$\varnothing 115$	4-M8x20	$\varnothing 19, \varnothing 22, \varnothing 24$	56.5	$\varnothing 95$	10	100	125.5	216	17.5	112.5	159
	$\varnothing 145$	4-M8x20	$\varnothing 19, \varnothing 22, \varnothing 24$	60	$\varnothing 110$	8	130	125.5	231	21	116	162.5
MYER-090-L2	$\varnothing 90$	4-M5x15, 4-M6x15	$\varnothing 19$	44	$\varnothing 70$	7	80	156	241.5	9	96	142.5
	$\varnothing 100$	4-M6x15	$\varnothing 16, \varnothing 19$	44	$\varnothing 80$	7	86	156	241.5	9	96	142.5
	$\varnothing 115$	4-M8x20	$\varnothing 19, \varnothing 22, \varnothing 24$	56.5	$\varnothing 95$	10	100	156	246.5	17.5	112.5	159
	$\varnothing 145$	4-M8x20	$\varnothing 19, \varnothing 22, \varnothing 24$	60	$\varnothing 110$	8	130	156	261.5	21	116	162.5

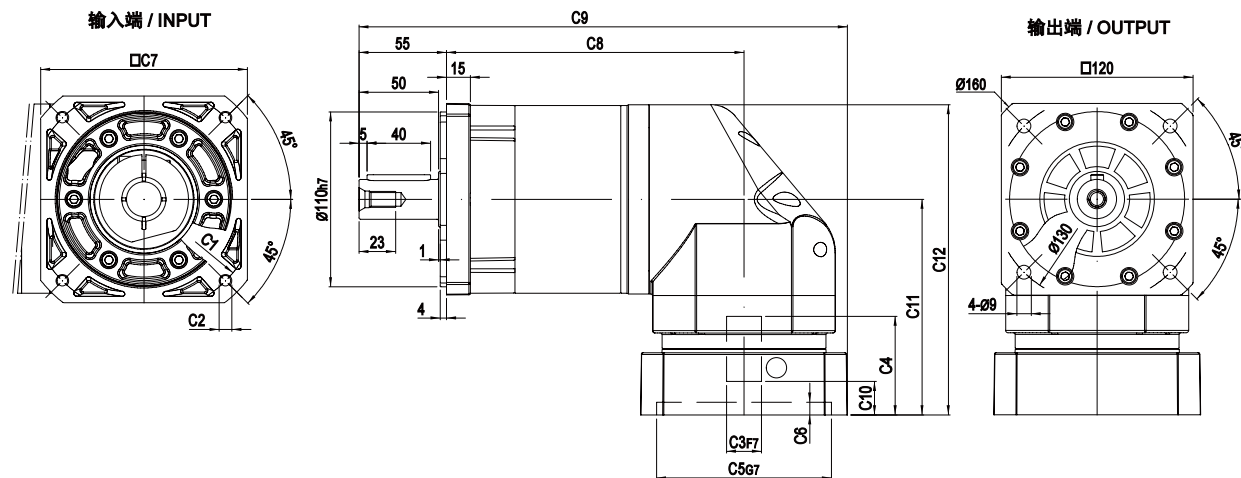
* C1-C7是公制标准马达连接板之尺寸, 可根据客户要求单独定做。
* C1-C7 are motor (metric standard) specific dimensions, which could be customised.

外形尺寸图 / OUTLINE DIMENSION SHEET

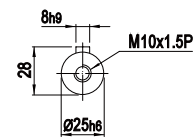
MYFR-120-L1



MYFR-120-L2



输出轴径 / Output Diameter

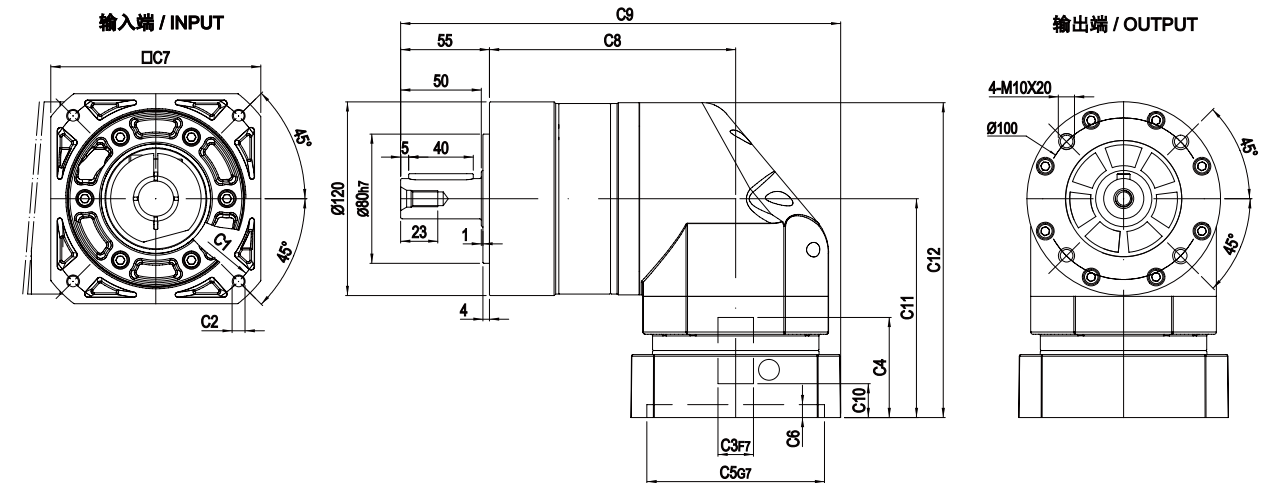


尺寸	C1	C2	C3	C4	C5	C6	C7	C8	C9	C10	C11	C12
MYFR-120-L1	Ø145	4-M8x20	Ø19,Ø22,Ø24	64	Ø110	8	130	152.5	272.5	21	135.5	195
	Ø200	4-M12x30	Ø35	82	Ø114.3	10	180	152.5	297.5	28	152.5	212
MYFR-120-L2	Ø145	4-M8x20	Ø19,Ø22,Ø24	64	Ø110	8	130	187	307	21	135.5	195
	Ø200	4-M12x30	Ø35	82	Ø114.3	10	180	187	332	28	152.5	212

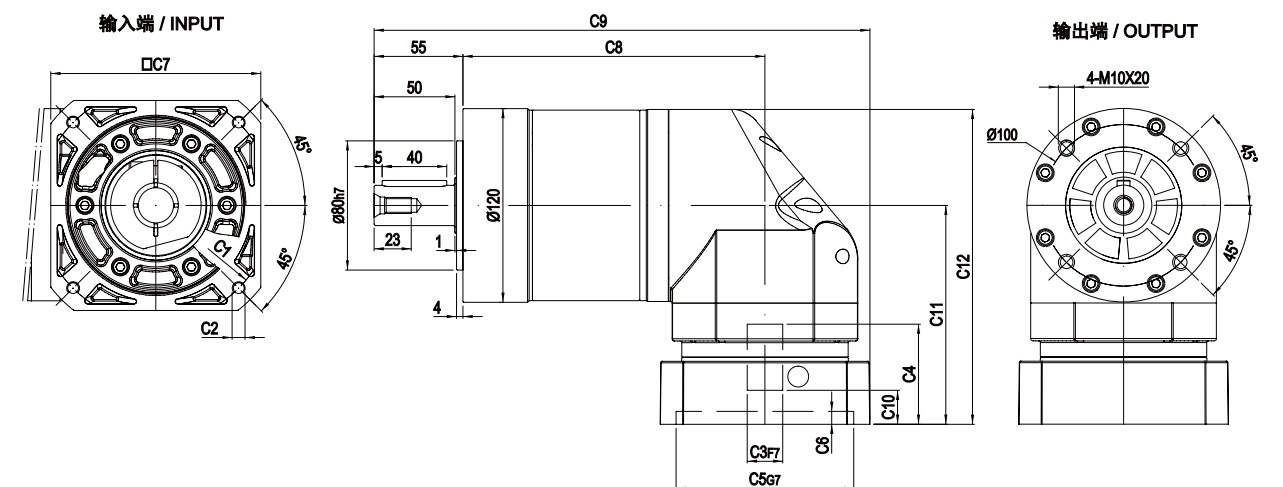
* C1-C7是公制标准马达连接板之尺寸, 可根据客户要求单独定做。
* C1-C7are motor(metric standard) specific dimensions, which could be customised.

外形尺寸图 / OUTLINE DIMENSION SHEET

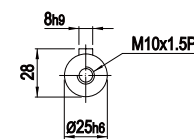
MYER-120-L1



MYER-120-L2



输出轴径 / Output Diameter

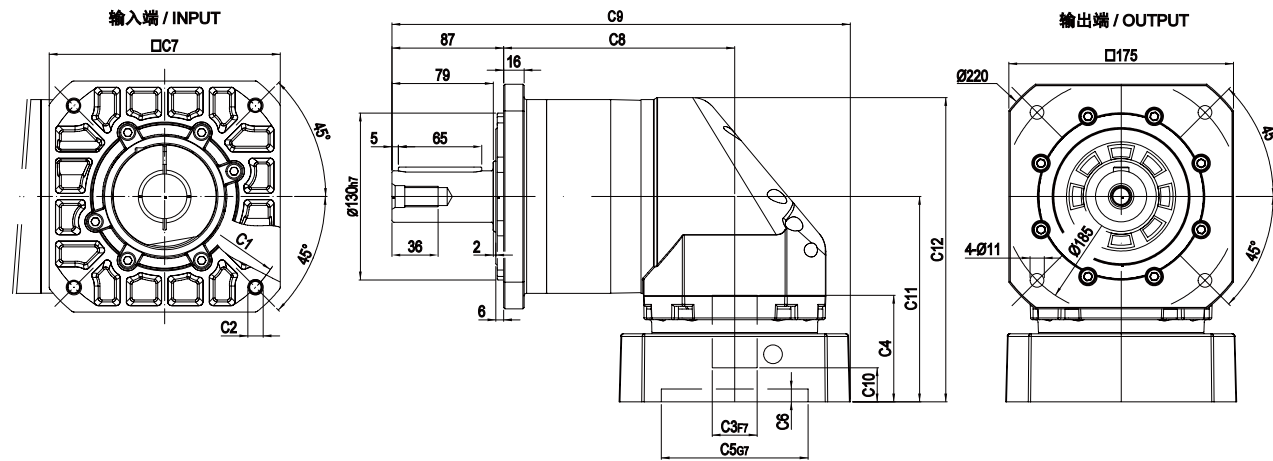


尺寸	C1	C2	C3	C4	C5	C6	C7	C8	C9	C10	C11	C12
MYER-120-L1	Ø145	4-M8x20	Ø19,Ø22,Ø24	64	Ø110	8	130	152.5	272.5	21	135.5	195
	Ø200	4-M12x30	Ø35	82	Ø114.3	10	180	152.5	297.5	28	152.5	212
MYER-120-L2	Ø145	4-M8x20	Ø19,Ø22,Ø24	64	Ø110	8	130	187	307	21	135.5	195
	Ø200	4-M12x30	Ø35	82	Ø114.3	10	180	187	332	28	152.5	212

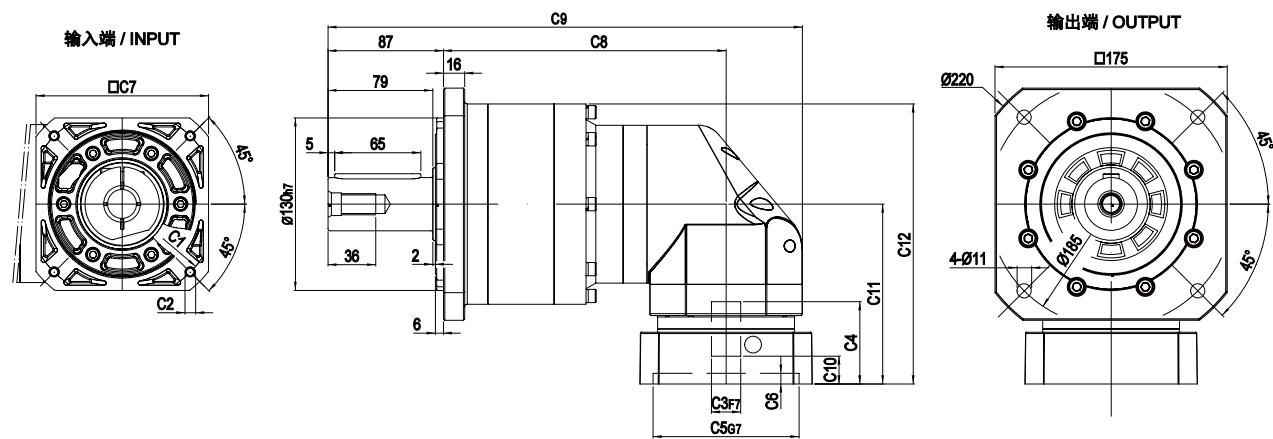
* C1-C7是公制标准马达连接板之尺寸, 可根据客户要求单独定做。
* C1-C7are motor(metric standard) specific dimensions, which could be customised.

外形尺寸图 / OUTLINE DIMENSION SHEET

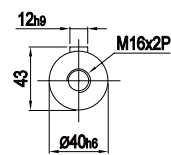
MYFR-160-L1



MYFR-160-L2



输出轴径 / Output Diameter

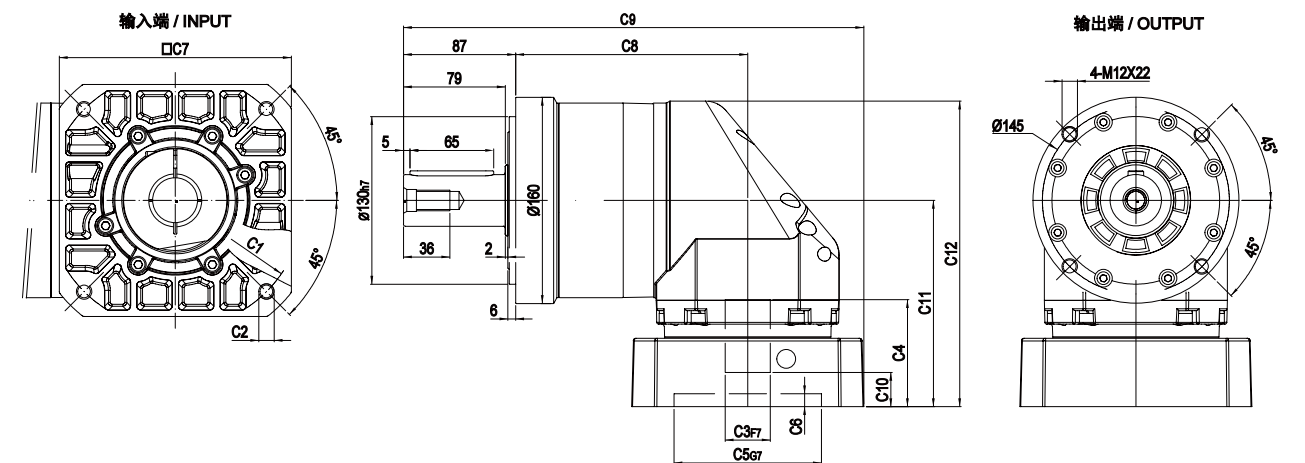


尺寸	C1	C2	C3	C4	C5	C6	C7	C8	C9	C10	C11	C12
MYFR-160-L1	$\phi 145$ $\phi 200$	4-M8x20 4-M12x30	$\phi 22, \phi 24$ $\phi 35$	72 82	$\phi 110$ $\phi 114.3$	10 10	130 180	180 357	338 26.5	20.5 160	149 237	226
MYFR-160-L2	$\phi 145$ $\phi 200$	4-M8x20 4-M12x30	$\phi 19, \phi 22, \phi 24$ $\phi 35$	64 82	$\phi 110$ $\phi 114.3$	8 10	130 180	213 390	365 21	21 135.5	135.5 211	211

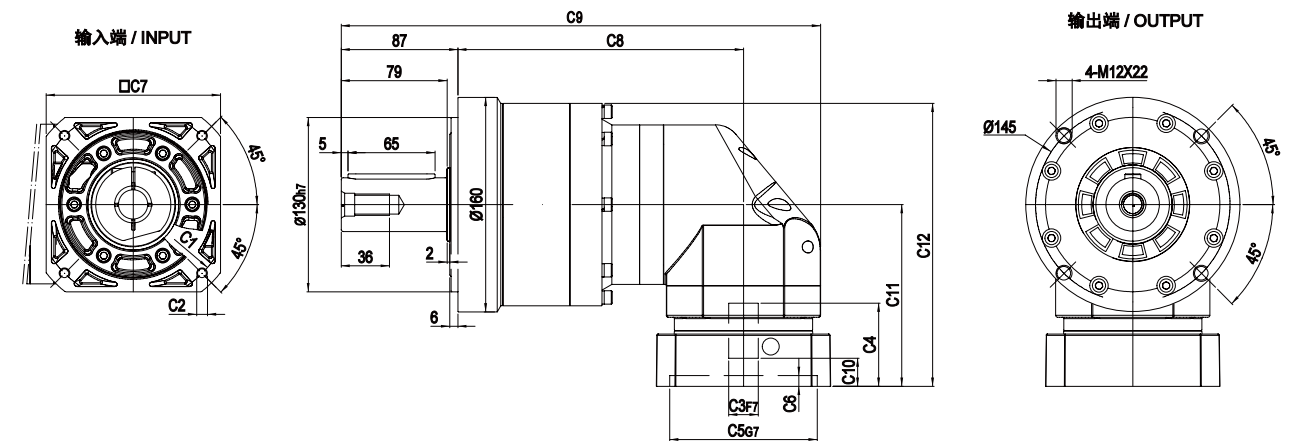
* C1~C7是公制标准马达连接板之尺寸, 可根据客户要求单独定做。
* C1~C7 are motor(metric standard) specific dimensions, which could be customised.

外形尺寸图 / OUTLINE DIMENSION SHEET

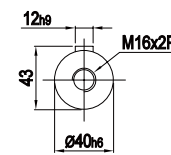
MYER-160-L1



MYER-160-L2



输出轴径 / Output Diameter



尺寸	C1	C2	C3	C4	C5	C6	C7	C8	C9	C10	C11	C12
MYER-160-L1	$\phi 145$ $\phi 200$	4-M8x20 4-M12x30	$\phi 22, \phi 24$ $\phi 35$	72 82	$\phi 110$ $\phi 114.3$	10 10	130 180	180 357	338 26.5	20.5 160	149 237	226
MYER-160-L2	$\phi 145$ $\phi 200$	4-M8x20 4-M12x30	$\phi 19, \phi 22, \phi 24$ $\phi 35$	64 82	$\phi 110$ $\phi 114.3$	8 10	130 180	213 390	365 21	21 135.5	135.5 211	211

* C1~C7是公制标准马达连接板之尺寸, 可根据客户要求单独定做。
* C1~C7 are motor(metric standard) specific dimensions, which could be customised.