

MYF/MYE SERIES

精密行星减速机

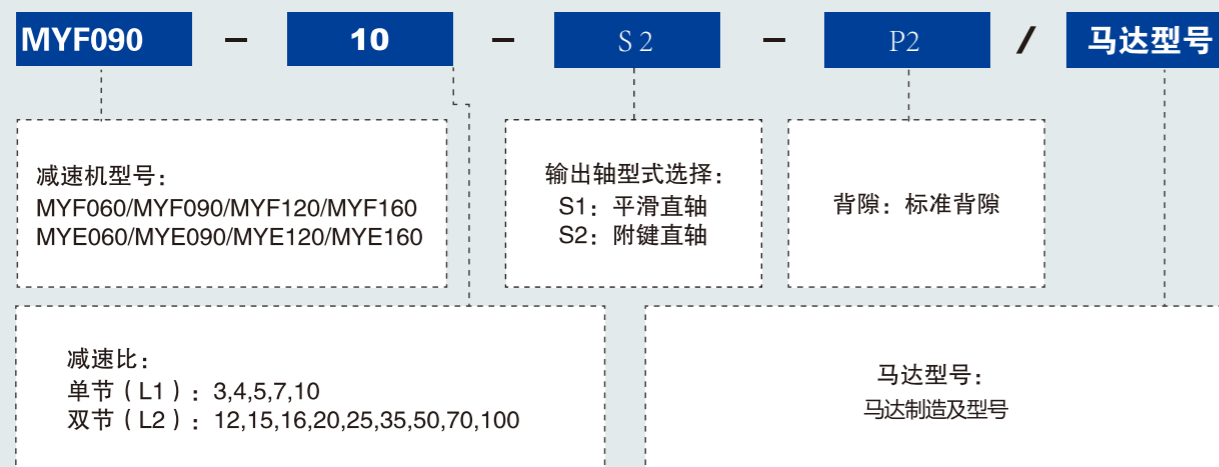


创新 + 质量 + 服务

性能 -MYF 减速机

规格	单位	节数	减速比 ^①	MYF060 MYE060	MYF090 MYE090	MYF120 MYE120	MYF160 MYE160
额定输出力矩 T_{2N}	Nm	单级 L1	3	27	96	161	423
			4	40	122	210	364
			5	40	122	210	423
			7	34	95	170	358
			10	16	56	86	210
		双级 L2	12	27	96	161	423
			15	27	96	161	423
			16	40	122	210	364
			20	40	122	210	364
			25	40	122	210	423
			35	40	122	210	423
			40	40	122	210	423
			50	40	122	210	423
			70	34	95	170	423
100	16	56	86	210			
紧急制动力矩 T_{2B}	Nm	L1,L2	3~100	3倍额定输出力矩			
额定输入转速 N_1	rpm	L1,L2	3~100	4000	3000	3000	3000
最大输入转速 n_{1B}	rpm	L1,L2	3~100	8000	6000	6000	6000
回程间隙	arcmin	L1	3~10	≤ 10	≤ 10	≤ 10	≤ 10
		L2	12~100	≤ 15	≤ 15	≤ 15	≤ 15
扭转刚性	Nm/arcmin	L1,L2	3~100	1.8	4.85	11	65.5
容许径向力 F_{2rB} ^②	N	L1,L2	3~100	240	450	1240	6520
容许轴向力 F_{2aB} ^②	N	L1,L2	3~100	220	430	1000	3260
使用寿命	hr	L1,L2	3~100	20000 ^③			
		L1	3~10	≥ 96%			
效率 η	%	L2	12~100	≥ 94%			
		L1	3~10	0.93	2.35	6.15	18.2
重量	kg	L1	3~10	1.15	2.70	8.00	24.9
		L2	12~100	-10°C ~ +90°C			
使用温度	°C	L1,L2	3~100	合成润滑油脂			
润滑		L1,L2	3~100	IP65			
防护等级		L1,L2	3~100	任意方向			
安装方式		L1,L2	3~100				
噪音值 ($n_1=3000\text{rpm}$)	dB	L1,L2	3~100	≤ 65	≤ 68	≤ 70	≤ 70

型号说明 MODEL ILLUMINATE



选型范例: MYF090-10-S2-P2/MHMD-082G1U

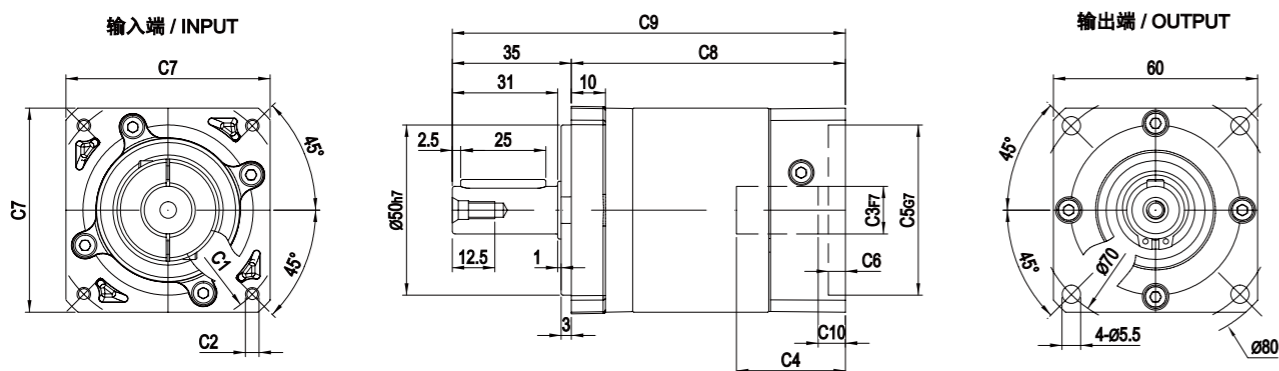
惯量 -MYF 减速机

规格	单位	节数	减速比 ^①	MYF060 MYE060	MYF090 MYE090	MYF120 MYE120	MYF160 MYE160
转动惯量 J_1	kg·cm ²	L1	3	0.46	1.73	12.78	36.72
			4	0.46	1.73	12.78	34.63
			5	0.46	1.73	12.78	34.24
			7	0.41	1.42	11.38	34.07
			10	0.41	1.42	11.38	34.02
		L2	12	0.44	1.49	12.18	34.24
			15	0.44	1.49	12.18	34.24
			16	0.44	1.49	12.18	34.24
			20	0.44	1.49	12.18	34.24
			25	0.44	1.49	12.18	34.24
			35	0.44	1.49	12.18	34.24
			40	0.44	1.49	12.18	34.02
			50	0.34	1.25	11.48	34.02
			70	0.34	1.25	11.48	34.02
100	0.34	1.25	11.48	34.02			

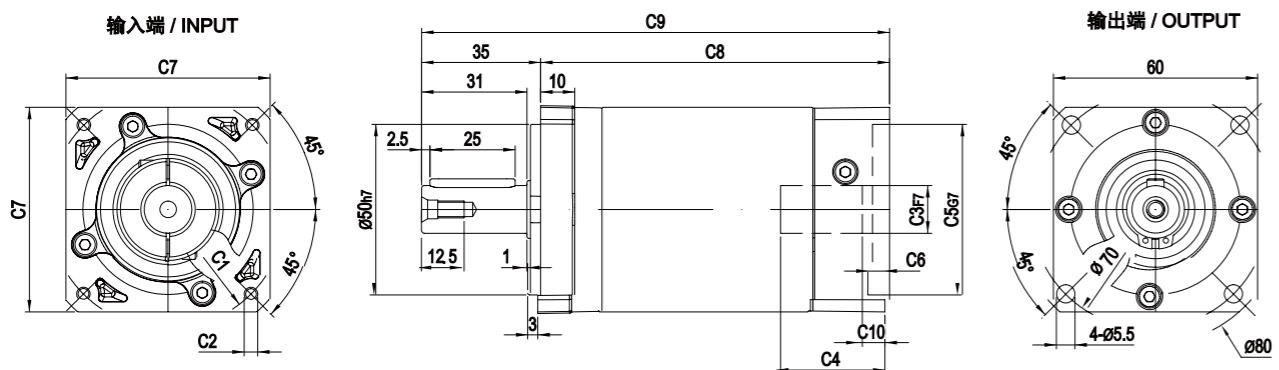
1. 减速比 ($i=N_{in}/N_{out}$)
2. 输出转速 100rpm 时, 作用于输出轴中心位置
3. 连续运转降低使用寿命二分之一

外形尺寸图 / OUTLINE DIMENSION SHEET

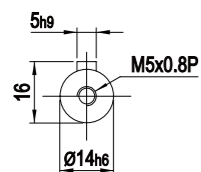
MYF-060-L1



MYF-060-L2



输出轴径 / Output Diameter

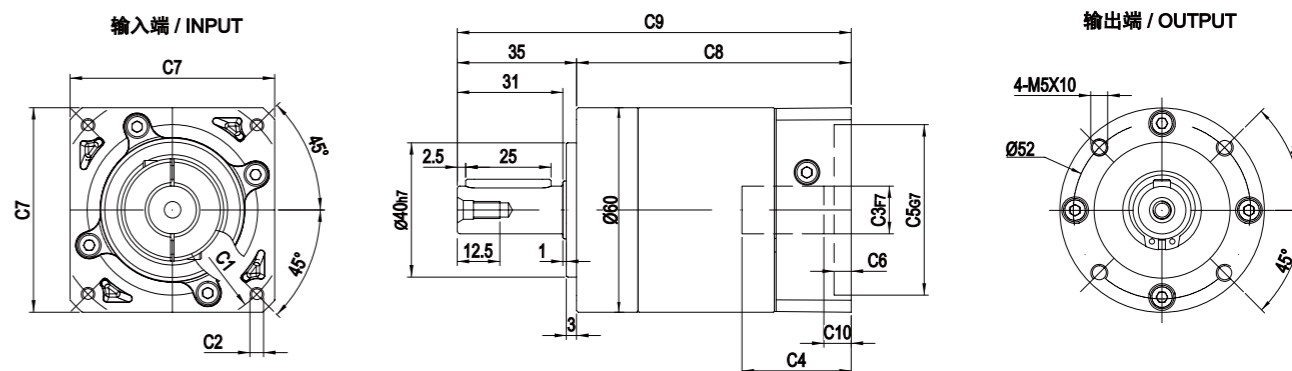


尺寸	C1	C2	C3	C4	C5	C6	C7	C8	C9	C10
MYF-060-L1	ø66.7	4-M4x12	ø8	32	ø38.1	5	60	80.5	115.5	8
	ø70	4-M4x12, 4-M5x12	ø11,ø14	32	ø50	5	60	80.5	115.5	8
	ø90	4-M5x15, 4-M6x15	ø19	42	ø70	6.5	80	90.5	125.5	7.5
MYF-060-L2	ø66.7	4-M4x12	ø8	32	ø38.1	5	60	102.5	137.5	8
	ø70	4-M4x12, 4-M5x12	ø11,ø14	32	ø50	5	60	102.5	137.5	8
	ø90	4-M5x15, 4-M6x15	ø19	42	ø70	6.5	80	112.5	147.5	7.5

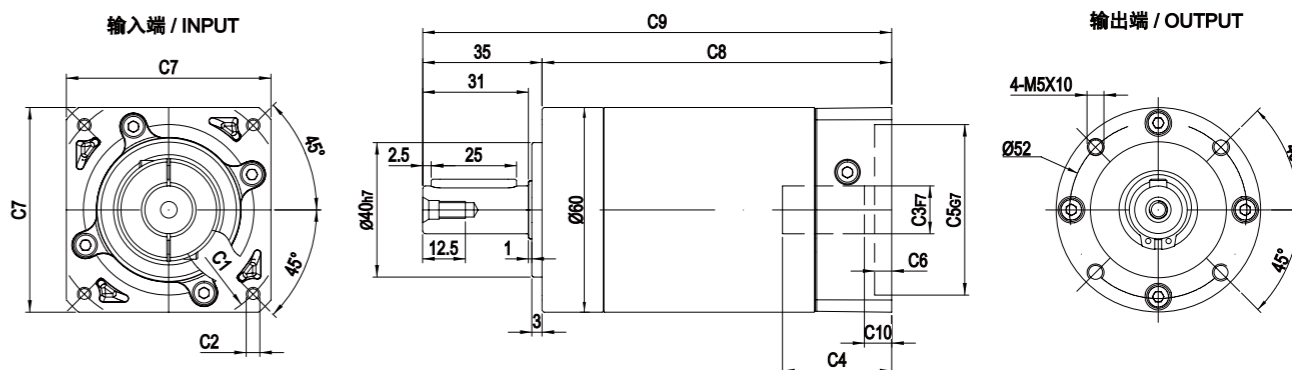
* C1~C7是公制标准马达连接板之尺寸, 可根据客户要求单独定做。
* C1~C7are motor(metric standard) specific dimensions, which could be customised.

外形尺寸图 / OUTLINE DIMENSION SHEET

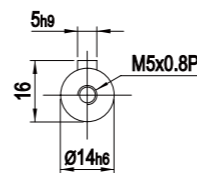
MYE-060-L1



MYE-060-L2



输出轴径 / Output Diameter

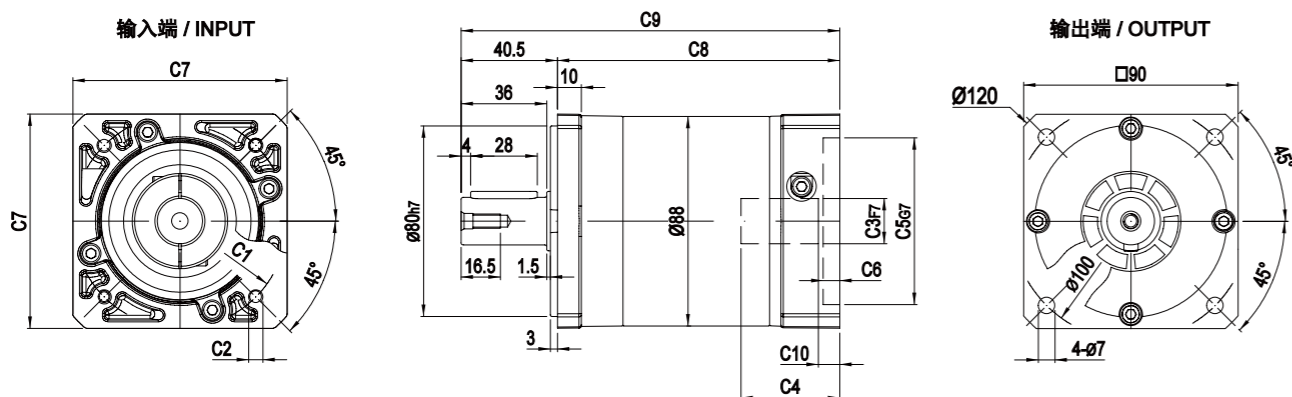


尺寸	C1	C2	C3	C4	C5	C6	C7	C8	C9	C10
MYE-060-L1	ø66.7	4-M4x12	ø8	32	ø38.1	5	60	80.5	115.5	8
	ø70	4-M4x12, 4-M5x12	ø11,ø14	32	ø50	5	60	80.5	115.5	8
	ø90	4-M5x15, 4-M6x15	ø19	42	ø70	6.5	80	90.5	125.5	7.5
MYE-060-L2	ø66.7	4-M4x12	ø8	32	ø38.1	5	60	102.5	137.5	8
	ø70	4-M4x12, 4-M5x12	ø11,ø14	32	ø50	5	60	102.5	137.5	8
	ø90	4-M5x15, 4-M6x15	ø19	42	ø70	6.5	80	112.5	147.5	7.5

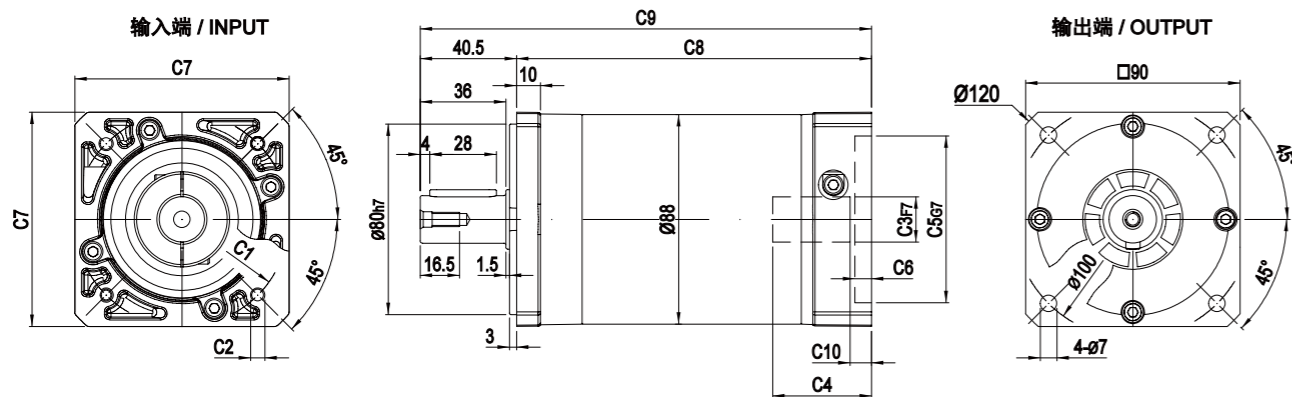
* C1~C7是公制标准马达连接板之尺寸, 可根据客户要求单独定做。
* C1~C7are motor(metric standard) specific dimensions, which could be customised.

外形尺寸图 / OUTLINE DIMENSION SHEET

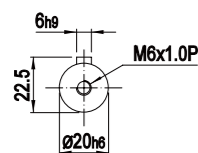
MYF-090-L1



MYF-090-L2



输出轴径 / Output Diameter

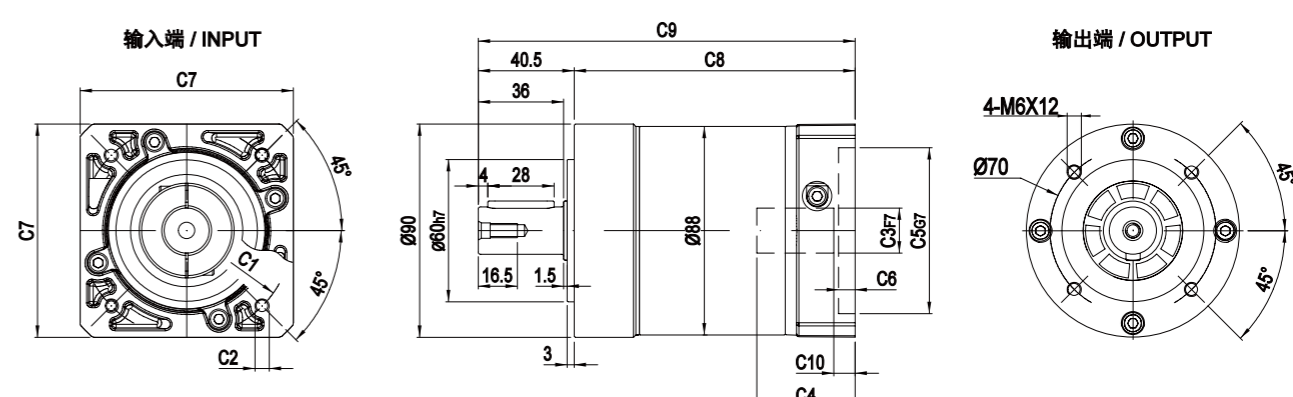


尺寸	C1	C2	C3	C4	C5	C6	C7	C8	C9	C10
MYF-090-L1	Ø90	4-M5x15, 4-M6x15	Ø19	42	Ø70	7	90	118.5	159	9
	Ø100	4-M6x15	Ø16,Ø19	42	Ø80	7	90	118.5	159	9
	Ø115	4-M8x20	Ø19,Ø22,Ø24	50	Ø95	10	100	122	162.5	10.5
	Ø145	4-M8x20	Ø19,Ø22,Ø24	57	Ø110	10	130	129	169.5	17.5
MYF-090-L2	Ø90	4-M5x15, 4-M6x15	Ø19	42	Ø70	7	90	149	189.5	9
	Ø100	4-M6x15	Ø16,Ø19	42	Ø80	7	90	149	189.5	9
	Ø115	4-M8x20	Ø19,Ø22,Ø24	50	Ø95	10	100	152.5	193	10.5
	Ø145	4-M8x20	Ø19,Ø22,Ø24	57	Ø110	10	130	159.5	200	17.5

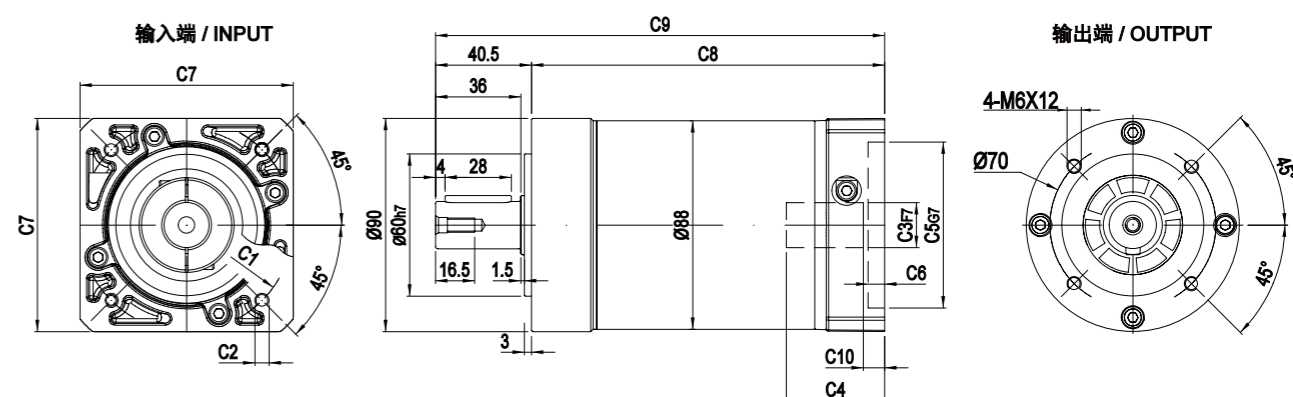
* C1-C7是公制标准马达连接板之尺寸, 可根据客户要求单独定做。
* C1-C7 are motor (metric standard) specific dimensions, which could be customised.

外形尺寸图 / OUTLINE DIMENSION SHEET

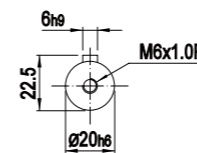
MYE-090-L1



MYE-090-L2



输出轴径 / Output Diameter

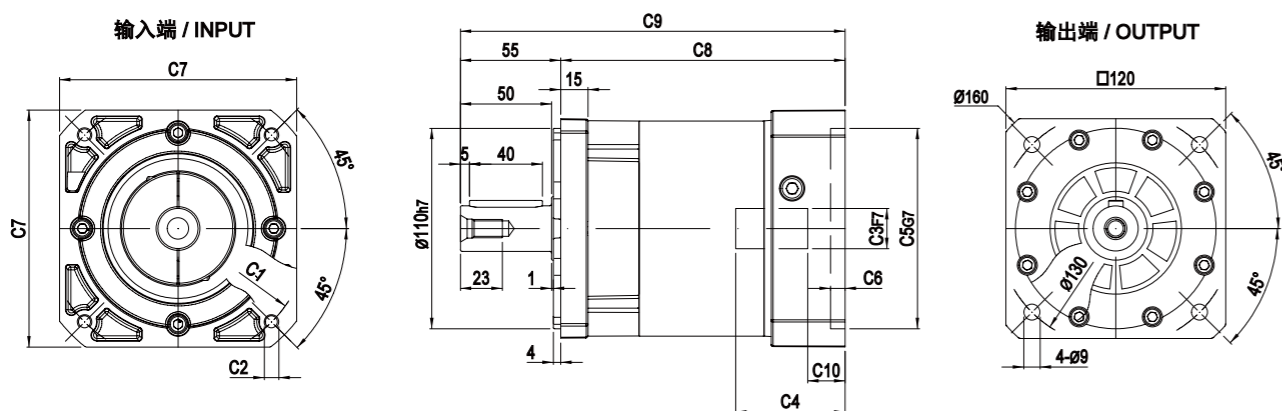


尺寸	C1	C2	C3	C4	C5	C6	C7	C8	C9	C10
MYE-090-L1	Ø90	4-M5x15, 4-M6x15	Ø19	42	Ø70	7	90	118.5	159	9
	Ø100	4-M6x15	Ø16,Ø19	42	Ø80	7	90	118.5	159	9
	Ø115	4-M8x20	Ø19,Ø22,Ø24	50	Ø95	10	100	122	162.5	10.5
	Ø145	4-M8x20	Ø19,Ø22,Ø24	57	Ø110	10	130	129	169.5	17.5
MYE-090-L2	Ø90	4-M5x15, 4-M6x15	Ø19	42	Ø70	7	90	149	189.5	9
	Ø100	4-M6x15	Ø16,Ø19	42	Ø80	7	90	149	189.5	9
	Ø115	4-M8x20	Ø19,Ø22,Ø24	50	Ø95	10	100	152.5	193	10.5
	Ø145	4-M8x20	Ø19,Ø22,Ø24	57	Ø110	10	130	159.5	200	17.5

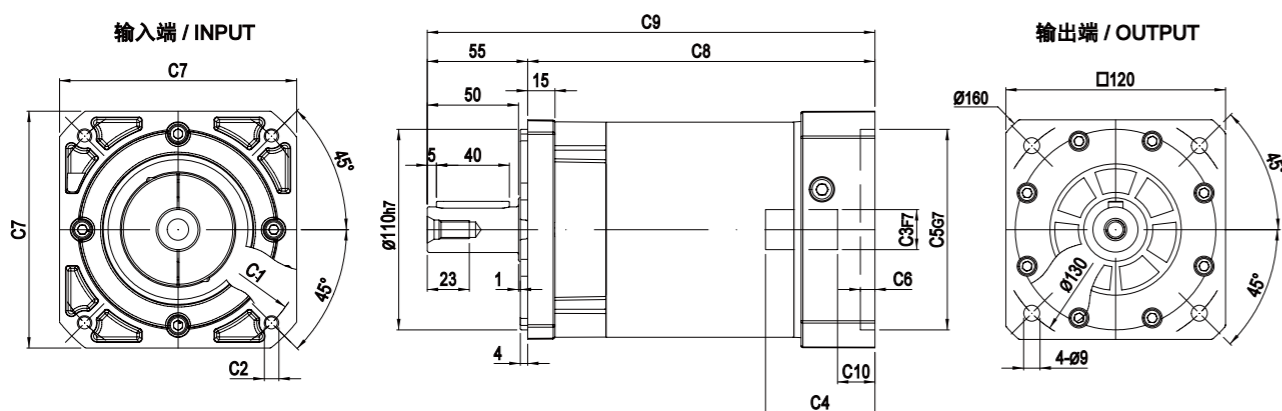
* C1-C7是公制标准马达连接板之尺寸, 可根据客户要求单独定做。
* C1-C7 are motor (metric standard) specific dimensions, which could be customised.

外形尺寸图 / OUTLINE DIMENSION SHEET

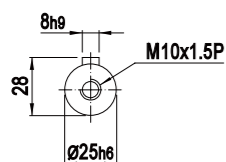
MYF-120-L1



MYF-120-L2



输出轴径 / Output Diameter

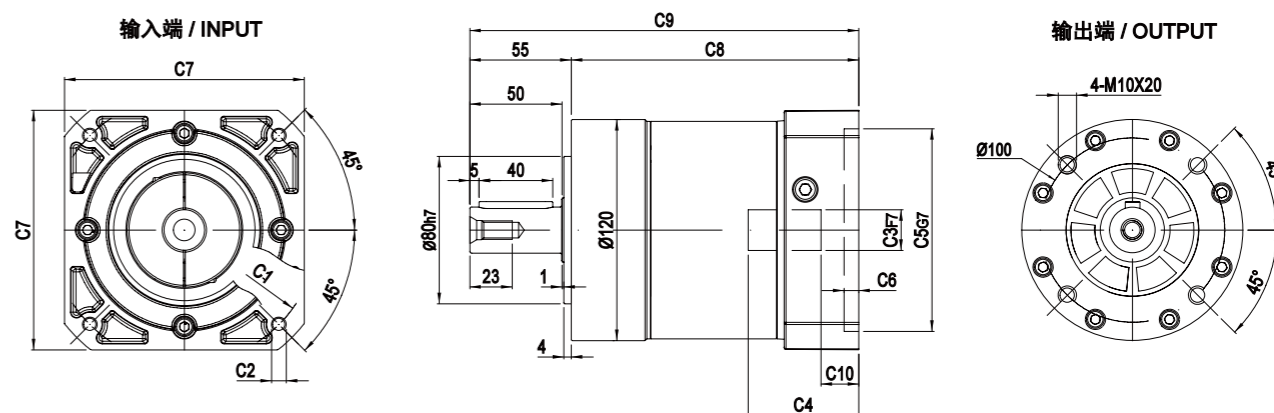


尺寸	C1	C2	C3	C4	C5	C6	C7	C8	C9	C10
MYF-120-L1	Ø115	4-M8x20	Ø19,Ø22,Ø24	60	Ø95	8	120	156	211	20.5
	Ø145	4-M8x20	Ø19,Ø22,Ø24	60	Ø110	8	130	156	211	20.5
MYF-120-L2	Ø115	4-M8x20	Ø19,Ø22,Ø24	60	Ø95	8	120	190.5	245.5	20.5
	Ø145	4-M8x20	Ø19,Ø22,Ø24	60	Ø110	8	130	190.5	245.5	20.5

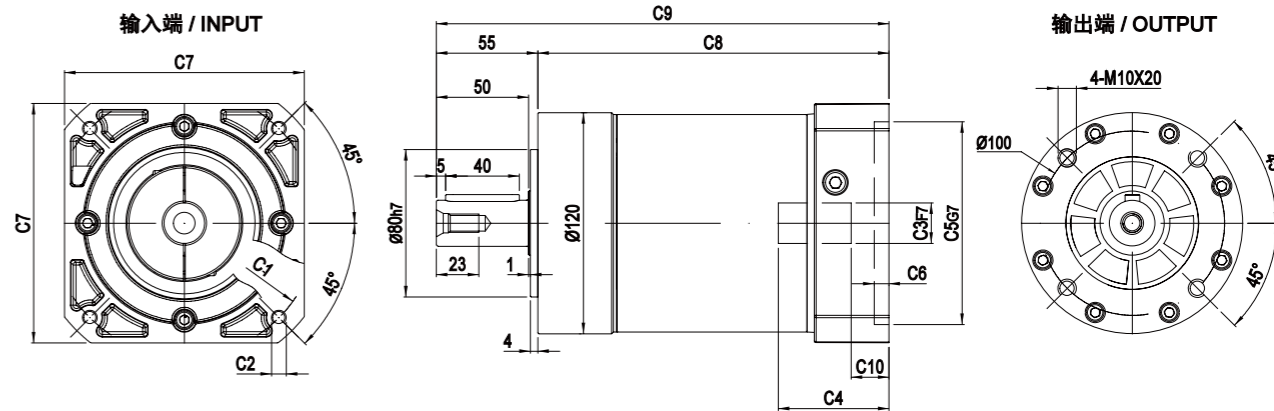
* C1~C7是公制标准马达连接板之尺寸, 可根据客户要求单独定做。
 * C1~C7are motor(metric standard) specific dimensions, which could be customised.

外形尺寸图 / OUTLINE DIMENSION SHEET

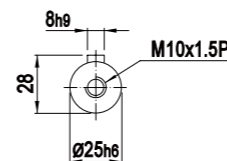
MYE-120-L1



MYE-120-L2



输出轴径 / Output Diameter

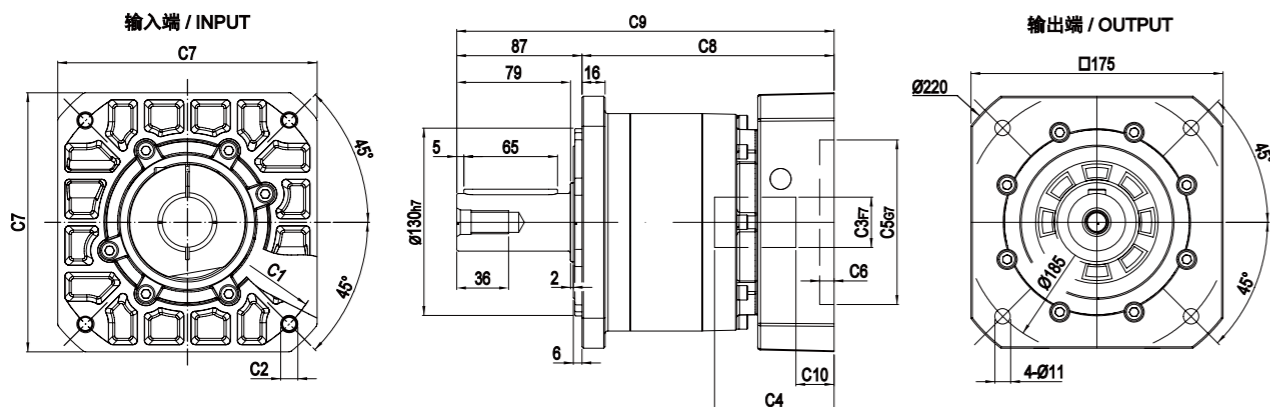


尺寸	C1	C2	C3	C4	C5	C6	C7	C8	C9	C10
MYE-120-L1	Ø115	4-M8x20	Ø19,Ø22,Ø24	60	Ø95	8	120	156	211	20.5
	Ø145	4-M8x20	Ø19,Ø22,Ø24	60	Ø110	8	130	156	211	20.5
MYE-120-L2	Ø115	4-M8x20	Ø19,Ø22,Ø24	60	Ø95	8	120	190.5	245.5	20.5
	Ø145	4-M8x20	Ø19,Ø22,Ø24	60	Ø110	8	130	190.5	245.5	20.5

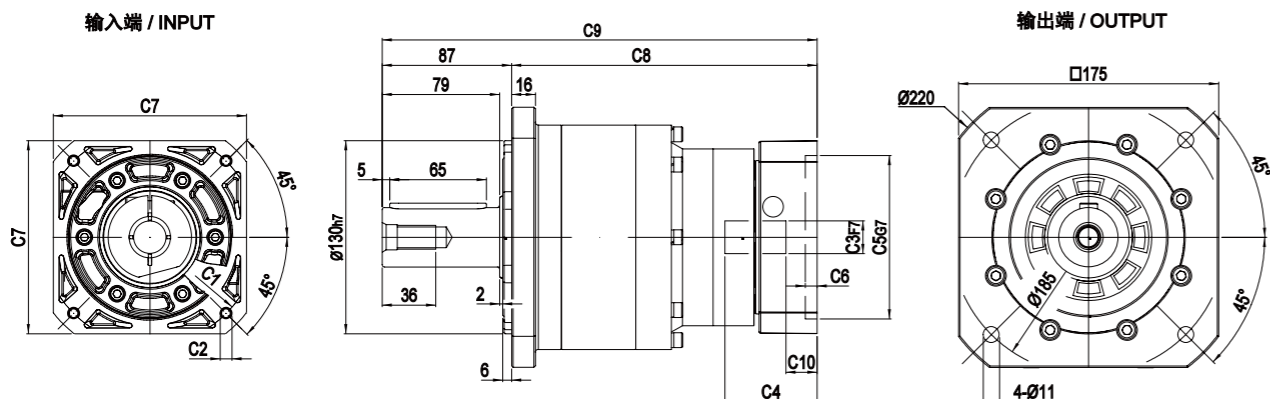
* C1~C7是公制标准马达连接板之尺寸, 可根据客户要求单独定做。
 * C1~C7are motor(metric standard) specific dimensions, which could be customised.

外形尺寸图 / OUTLINE DIMENSION SHEET

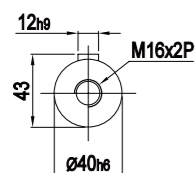
MYF-160-L1



MYF-160-L2



输出轴径 / Output Diameter

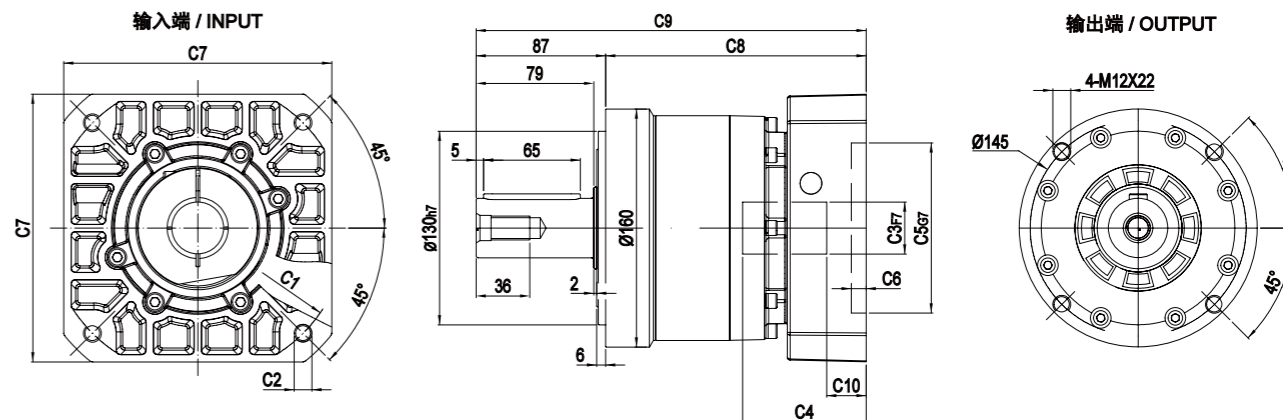


尺寸	C1	C2	C3	C4	C5	C6	C7	C8	C9	C10
MYF-160-L1	Ø145	4-M8x20	Ø22,Ø24	72	Ø110	10	130	164	251	20.5
	Ø200	4-M12x30	Ø35	83	Ø114.3	10	180	175	262	26.5
MYF-160-L2	Ø145	4-M8x20	Ø19,Ø22,Ø24	62	Ø110	8	130	205.5	292.5	21
	Ø200	4-M12x30	Ø35	82	Ø114.3	10	180	225.5	312.5	28

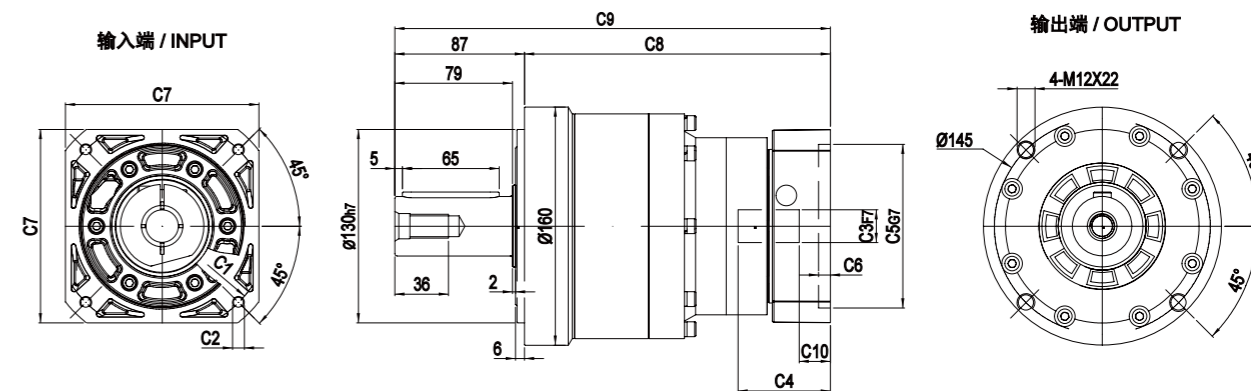
* C1~C7是公制标准马达连接板之尺寸, 可根据客户要求单独定做。
* C1~C7 are motor(metric standard) specific dimensions, which could be customised.

外形尺寸图 / OUTLINE DIMENSION SHEET

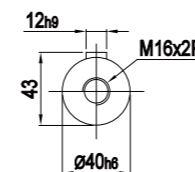
MYE-160-L1



MYE-160-L2



输出轴径 / Output Diameter



尺寸	C1	C2	C3	C4	C5	C6	C7	C8	C9	C10
MYE-160-L1	Ø145	4-M8x20	Ø22,Ø24	72	Ø110	10	130	164	251	20.5
	Ø200	4-M12x30	Ø35	83	Ø114.3	10	180	175	262	26.5
MYE-160-L2	Ø145	4-M8x20	Ø19,Ø22,Ø24	62	Ø110	8	130	205.5	292.5	21
	Ø200	4-M12x30	Ø35	82	Ø114.3	10	180	225.5	312.5	28

* C1~C7是公制标准马达连接板之尺寸, 可根据客户要求单独定做。
* C1~C7 are motor(metric standard) specific dimensions, which could be customised.