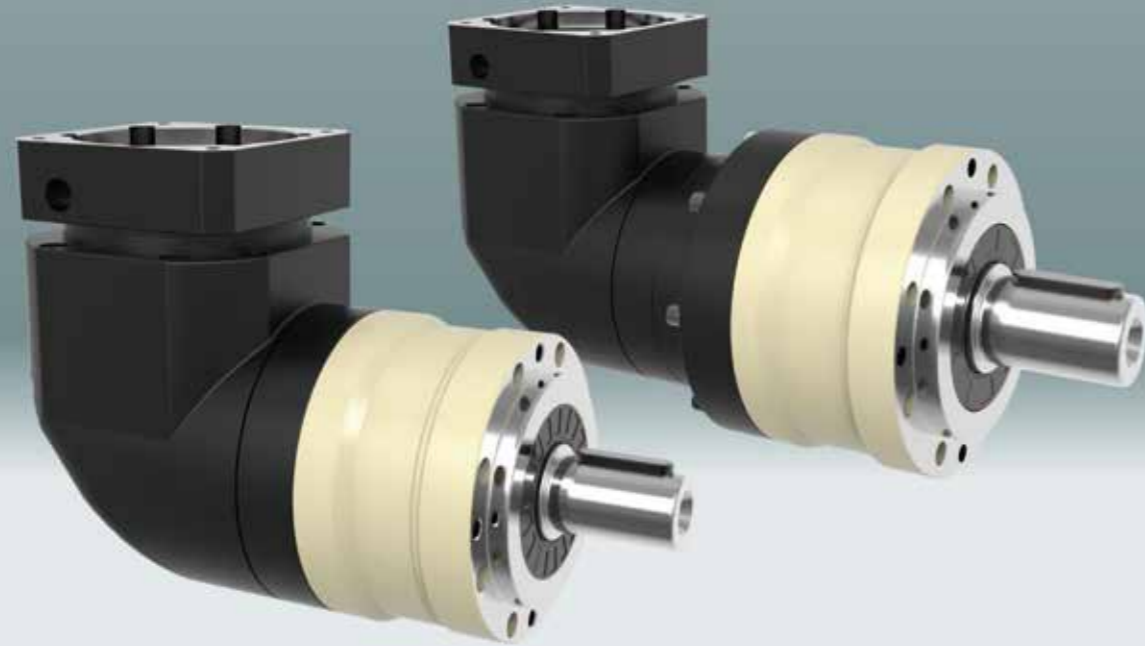


# MYBR-E SERIES

精密行星减速机



## 型号说明 MODEL ILLUMINATE

MYBR-E090 - 10 - S2 - P2 / 马达

减速机型式：  
MYBR-E070/MYBR-E090  
MYBR-E120/MYBR-E155

输出轴型式选择：S1：平滑直轴  
S2：附键直轴

马达型号：  
马达制造及型号

减速比：单级(L1)：3,4,5,6,7,8,10,14,20  
双级(L2)：12,15,20,25,30,35,40,50,60,70,80,100,120,140,160,200

背隙：标准背隙

选型范例：MYBR-E090-10-S2-P2/MHMD-082G1U

创新 + 质量 + 服务

## 性能 -MYBR-E 减速机

规格	级数	减速比 <sup>1</sup>	MYBR-E070	MYBR-E090	MYBR-E120	MYBR-E155	
额定输出力矩 $T_{2N}$	1	3	55	130	208	342	
		4	50	140	290	542	
		5	60	160	330	650	
		6	55	150	310	600	
		7	50	140	300	550	
		8	50	140	290	542	
		10	60	160	330	650	
		14	50	140	300	550	
		20	40	100	230	450	
		2	12	55	130	208	342
	15		55	130	208	342	
	20		50	140	290	542	
	25		60	160	330	650	
	30		55	130	208	342	
	35		60	160	330	650	
	40		50	140	290	542	
	50		60	160	330	650	
	60		55	150	310	600	
	70		60	160	330	650	
	80	50	140	290	542		
100	60	160	330	650			
120		150	310	600			
140		140	300	550			
160		120	260	500			
200		100	230	450			
最大输出力矩 $T_{2B}$	Nm	1,2	3~200	3倍额定输出力矩			
额定输入转速 $n_1$	rpm	1,2	3~200	5,000	4,000	4,000	3,000
最大输入转速 $n_{1B}$	rpm	1,2	3~200	10,000	8,000	8,000	6,000
标准背隙	arcmin	1	3~20	≤6	≤6	≤6	≤6
		2	12~200	≤9	≤9	≤9	≤9
扭转刚性	Nm/arcmin	1,2	3~200	7	14	25	50
容许径向力 $F_{2rB}^2$	N	1,2	3~200	1,530	3,250	6,700	9,400
容许轴向力 $F_{2a1B}^2$	N	1,2	3~200	630	1,300	3,000	4,000
容许轴向力 $F_{2a2B}^2$	N	1,2	3~200	765	1,625	3,350	4,700
使用寿命	hr	1,2	3~200	20,000*			
效率 $\eta$	%	1	3~20	≤95%			
		2	12~200	≤92%			
重量	kg	1	3~20	2.1	6.4	13	24.5
		2	12~200	2.5	7.8	14.2	27.5
使用温度	°C	1,2	3~200	-10°C~+90°C			
润滑		1,2	3~200	合成润滑油脂			
防护等级		1,2	3~200	IP65			
安装方向		1,2	3~200	任意方向			
噪音值 ( $n_1=3000\text{rpm}$ )	dB	1,2	3~200	≤63	≤65	≤68	≤70

## 惯量 -MYBR-E 减速机

规格	级数	减速比 <sup>1</sup>	MYBR-E070	MYBR-E090	MYBR-E120	MYBR-E155
转动惯量 $J_1$	1	3~7	0.35	2.25	6.84	23.4
		8~10	0.07	1.87	6.25	21.8
		14~20	0.07	1.87	6.25	21.8
		12~40	0.09	0.35	2.25	6.84
	2	50	0.09	0.31	1.87	6.25
		60	0.09	0.35	2.25	6.84
		70~100	0.09	0.31	1.87	6.25
		120~200		0.31	1.87	6.25

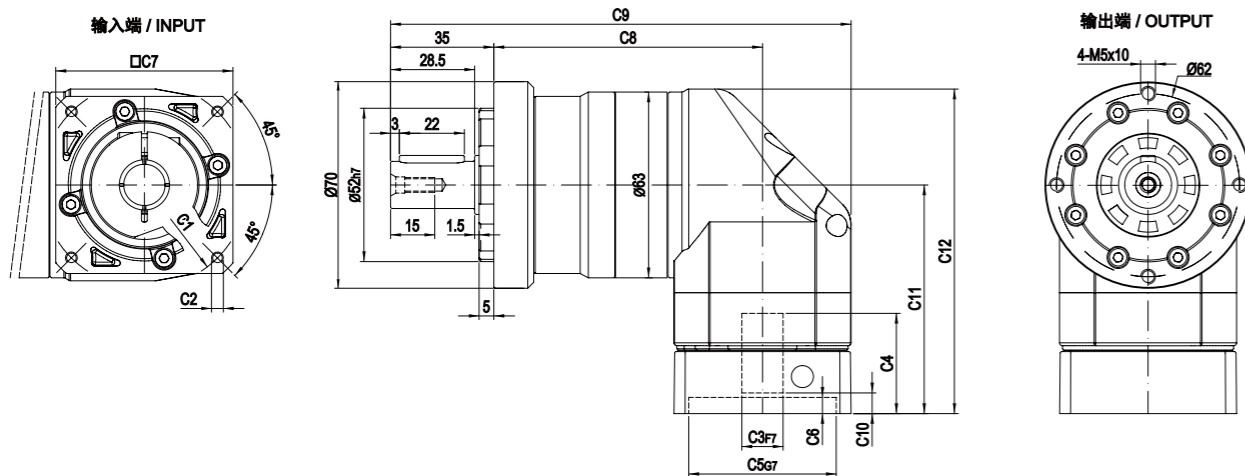
1. 减速比 ( $i=N_{in}/N_{out}$ )

\* 连续运转降低使用寿命二分之一。

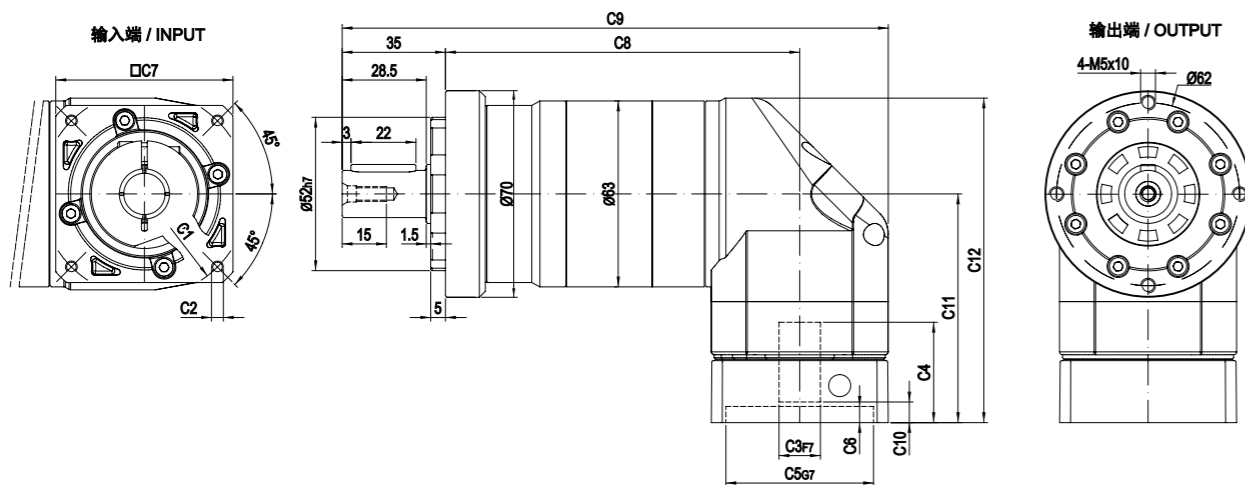
2. 输出转速 100rpm 时，作用于输出轴中心位置。

外形尺寸图 / OUTLINE DIMENSION SHEET

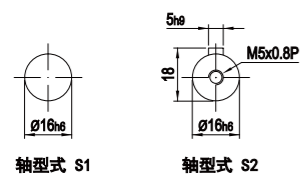
MYBR-E-070-L1



MYBR-E-070-L2



输出轴径 / Output Diameter

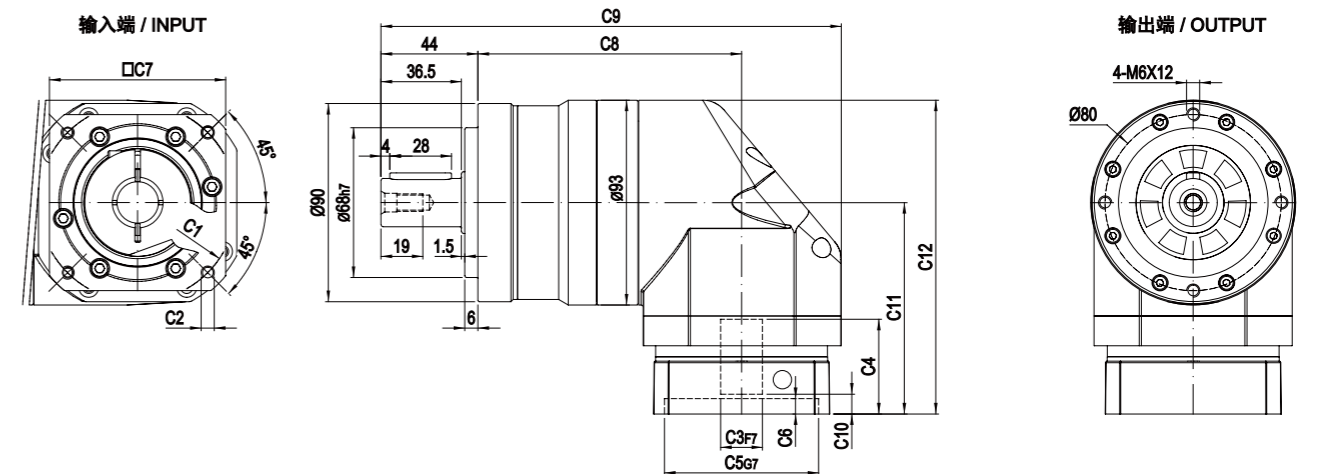


尺寸	C1	C2	C3	C4	C5	C6	C7	C8	C9	C10	C11	C12
MYBR-E-070-L1	$\phi 66.7$	4-M4x12	$\phi 8$	33	$\phi 38.1$	5.5	60	91	156	7	77.5	110
	$\phi 70$	4-M4x12, 4-M5x12	$\phi 11, \phi 14$	33	$\phi 50$	5.5	60	91	156	7	77.5	110
	$\phi 90$	4-M5x15, 4-M6x15	$\phi 19$	42	$\phi 70$	7	80	91	166	9	87	119.5
MYBR-E-070-L2	$\phi 66.7$	4-M4x12	$\phi 8$	33	$\phi 38.1$	5.5	60	120	185	7	77.5	110
	$\phi 70$	4-M4x12, 4-M5x12	$\phi 11, \phi 14$	33	$\phi 50$	5.5	60	120	185	7	77.5	110
	$\phi 90$	4-M5x15, 4-M6x15	$\phi 19$	42	$\phi 70$	7	80	120	195	9	87	119.5

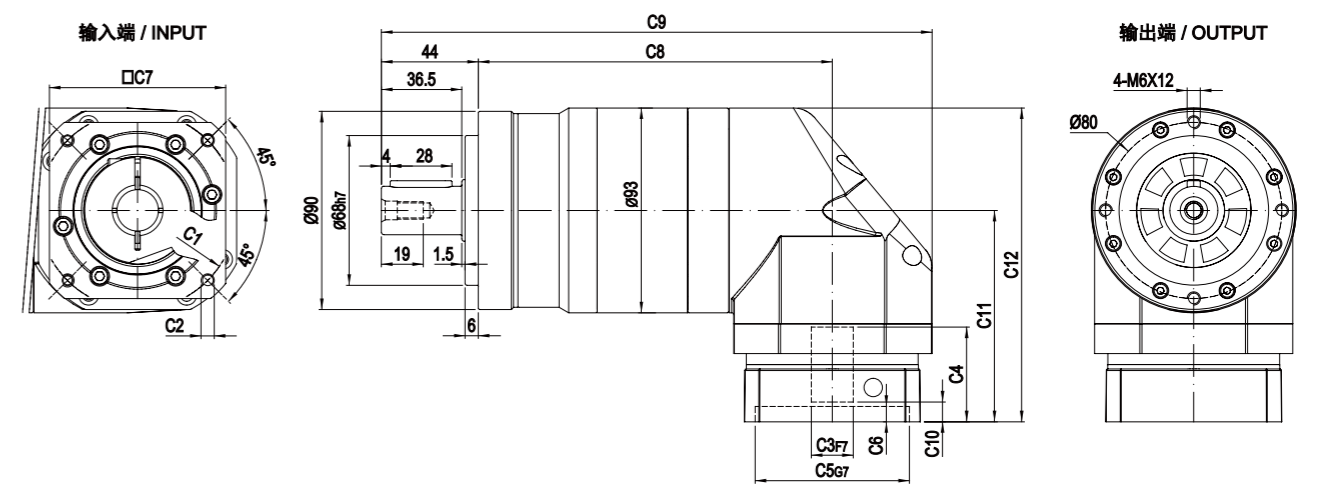
\* C1-C7是公制标准马达连接板之尺寸, 可根据客户要求单独定做。  
\* C1-C7 are motor (metric standard) specific dimensions, which could be customised.

外形尺寸图 / OUTLINE DIMENSION SHEET

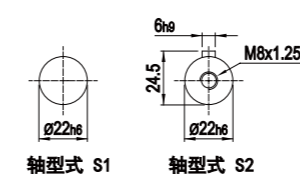
MYBR-E-090-L1



MYBR-E-090-L2



输出轴径 / Output Diameter

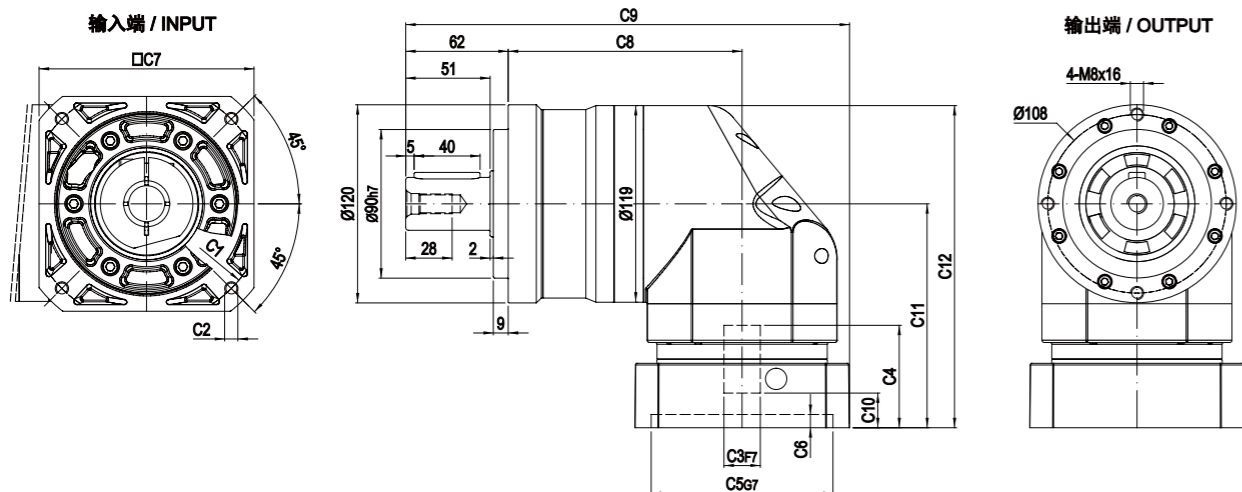


尺寸	C1	C2	C3	C4	C5	C6	C7	C8	C9	C10	C11	C12
MYBR-E-090-L1	$\phi 90$	4-M5x15, 4-M6x15	$\phi 19$	44	$\phi 70$	7	80	120	209	9	96	142.5
	$\phi 100$	4-M6x15	$\phi 16, \phi 19$	44	$\phi 80$	7	86	120	209	9	96	142.5
	$\phi 115$	4-M8x20	$\phi 19, \phi 22, \phi 24$	56.5	$\phi 95$	10	100	120	214	17.5	108.5	155
	$\phi 145$	4-M8x20	$\phi 19, \phi 22, \phi 24$	60	$\phi 110$	8	130	120	229	21	112	158.5
MYBR-E-090-L2	$\phi 90$	4-M5x15, 4-M6x15	$\phi 19$	44	$\phi 70$	7	80	161	250	9	96	142.5
	$\phi 100$	4-M6x15	$\phi 16, \phi 19$	44	$\phi 80$	7	86	161	250	9	96	142.5
	$\phi 115$	4-M8x20	$\phi 19, \phi 22, \phi 24$	56.5	$\phi 95$	10	100	161	255	17.5	108.5	155
	$\phi 145$	4-M8x20	$\phi 19, \phi 22, \phi 24$	60	$\phi 110$	8	130	161	270	21	112	158.5

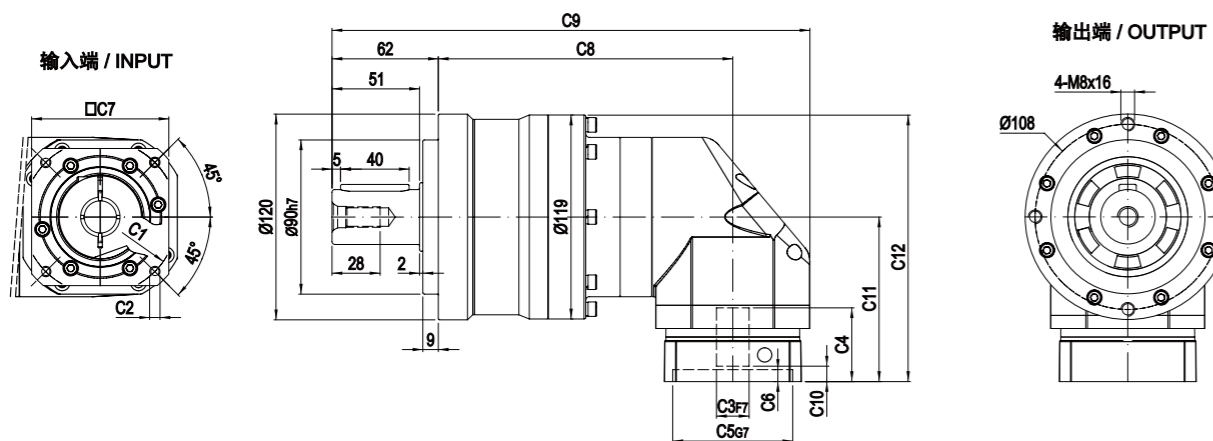
\* C1-C7是公制标准马达连接板之尺寸, 可根据客户要求单独定做。  
\* C1-C7 are motor (metric standard) specific dimensions, which could be customised.

外形尺寸图 / OUTLINE DIMENSION SHEET

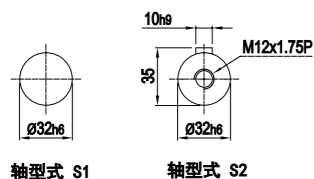
MYBR-E-120-L1



MYBR-E-120-L2



输出轴径 / Output Diameter

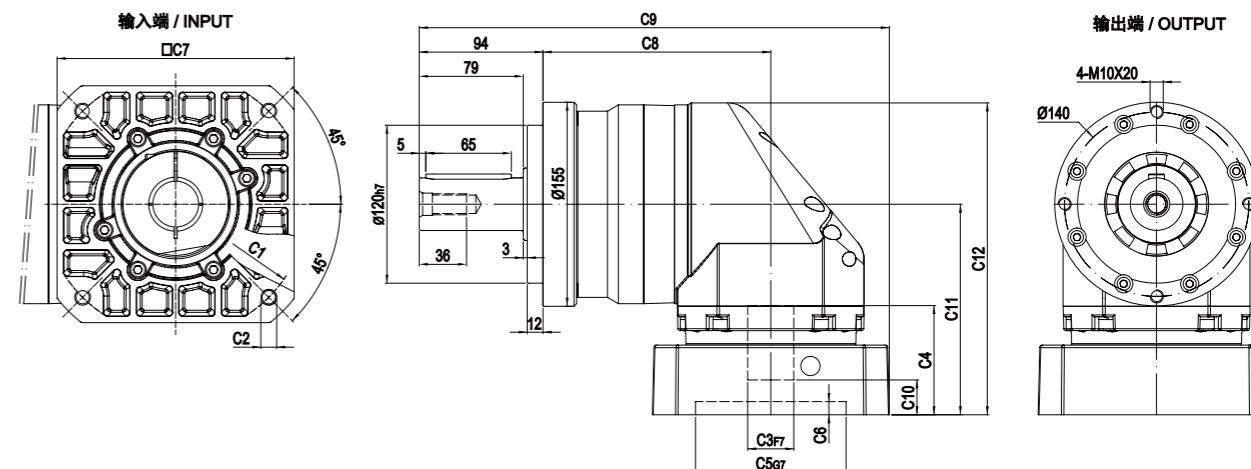


尺寸	C1	C2	C3	C4	C5	C6	C7	C8	C9	C10	C11	C12
MYBR-E-120-L1	Ø145	4-M8x20	Ø19,Ø22,Ø24	64	Ø110	8	130	141.5	268.5	21	135.5	195
	Ø200	4-M12x30	Ø35	82	Ø114.3	10	180	141.5	293.5	28	155.5	212
MYBR-E-120-L2	Ø90	4-M5x15, 4-M6x15	Ø19	44	Ø70	7	80	172	279	9	96	155.5
	Ø100	4-M6x15	Ø16,Ø19	44	Ø80	7	86	172	279	9	96	155.5
	Ø115	4-M8x20	Ø19,Ø22,Ø24	56.5	Ø95	10	100	172	284	17.5	108.5	168
Ø145	4-M8x20	Ø19,Ø22,Ø24	60	Ø110	8	130	172	299	21	112	171.5	

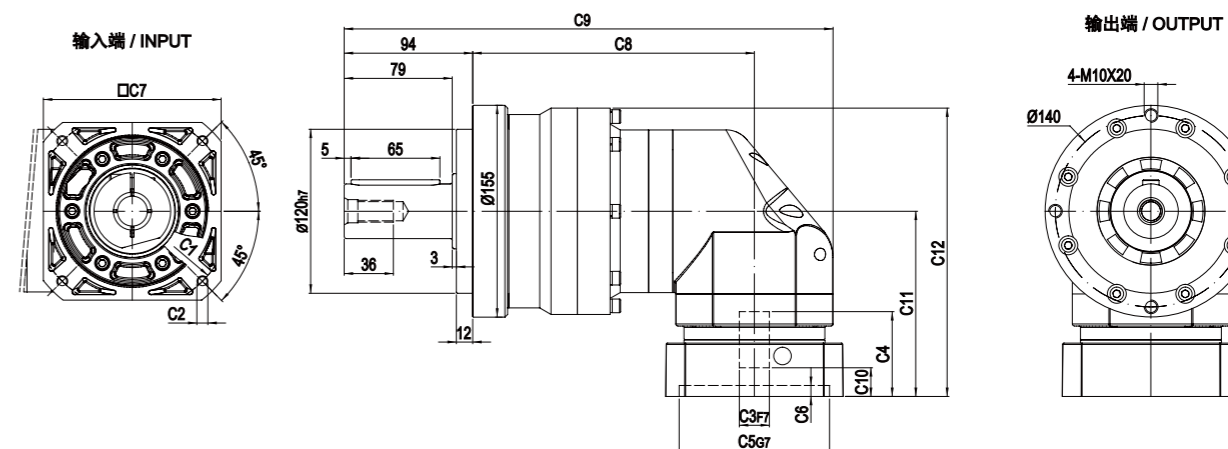
\* C1-C7是公制标准马达连接板之尺寸, 可根据客户要求单独定做。  
\* C1-C7 are motor(metric standard) specific dimensions, which could be customised.

外形尺寸图 / OUTLINE DIMENSION SHEET

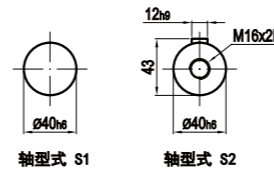
MYBR-E-155-L1



MYBR-E-155-L2



输出轴径 / Output Diameter



尺寸	C1	C2	C3	C4	C5	C6	C7	C8	C9	C10	C11	C12
MYBR-E-155-L1	Ø145	4-M8x20	Ø22,Ø24	72	Ø110	10	130	173	338	20.5	149	226
	Ø200	4-M12x30	Ø35	82	Ø114.3	10	180	173	357	26.5	160	237
MYBR-E-155-L2	Ø145	4-M8x20	Ø19,Ø22,Ø24	64	Ø110	8	130	206	365	21	135.5	211
	Ø200	4-M12x30	Ø35	82	Ø114.3	10	180	206	390	28	152.5	228

\* C1-C7是公制标准马达连接板之尺寸, 可根据客户要求单独定做。  
\* C1-C7 are motor(metric standard) specific dimensions, which could be customised.