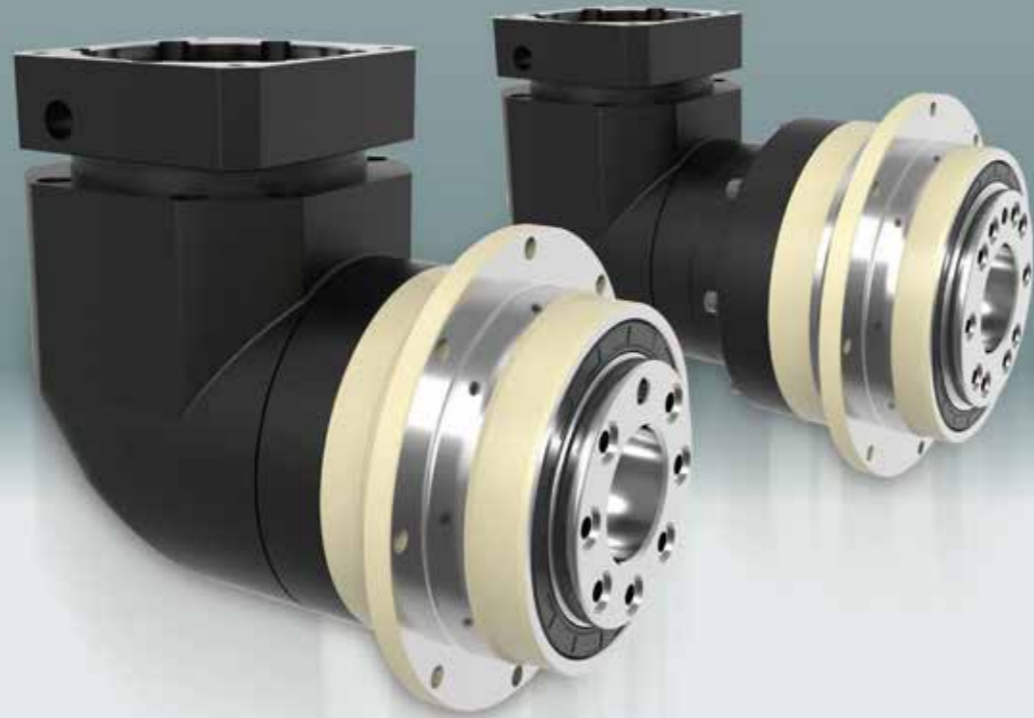
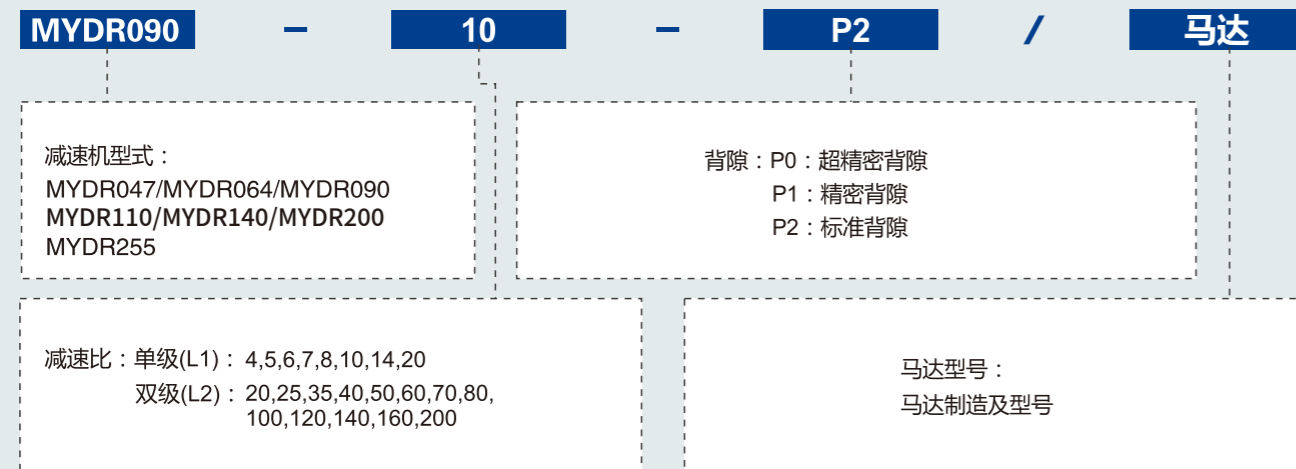


MYDR SERIES

精密行星减速机



型号说明 MODEL ILLUMINATE



选型范例：MYDR090-10-P2/MHMD-082G1U

创新 + 质量 + 服务

性能 -MYDR 减速机

规格	级数	减速比 ¹	MYDR047	MYDR064	MYDR090	MYDR110	MYDR140	MYDR200	MYDR255	
额定输出力矩 T_{2N}	1	4	19	48	130	270	560	1,100	1,700	
		5	22	60	160	330	650	1,200	2,000	
		6	-	55	150	310	600	-	-	
		7	19	50	140	300	550	1,100	1,800	
		8	17	48	130	270	560	1,000	1,600	
		10	14	60	160	330	650	520	1,220	
		14	-	50	140	300	550	1,100	1,800	
		20	-	40	100	230	450	520	1,220	
		20	19	48	130	270	560	1,100	1,700	
		25	22	60	160	330	650	1,200	2,000	
	2	35	22	60	160	330	650	1,200	2,000	
		40	22	48	130	270	560	1,200	2,000	
		50	22	60	160	330	650	1,200	2,000	
		60	-	55	150	310	600	-	-	
		70	22	60	160	330	650	1,200	2,000	
		80	-	48	130	270	560	-	-	
		100	22	60	160	330	650	1,200	2,000	
		120	-	-	150	310	600	-	-	
		140	-	-	140	300	550	1,100	1,800	
		160	-	-	120	260	500	-	-	
200	-	-	100	230	450	520	1,220			
最大输出力矩 T_{2B}	Nm	1,2	4~200	3倍额定输出力矩						
额定输入转速 n_1	rpm	1,2	4~200	5,000	5,000	4,000	4,000	3,000	3,000	2,000
最大输入转速 n_{1B}	rpm	1,2	4~200	10,000	10,000	8,000	8,000	6,000	6,000	4,000
超精密背隙 P0	arcmin	1	4~20	-	-	≤2	≤2	≤2	≤2	≤2
		2	20~200	-	-	≤4	≤4	≤4	≤4	≤4
精密背隙 P1	arcmin	1	4~20	≤4	≤4	≤4	≤4	≤4	≤4	≤4
		2	20~200	≤7	≤7	≤7	≤7	≤7	≤7	≤7
标准背隙 P2	arcmin	1	4~20	≤6	≤6	≤6	≤6	≤6	≤6	≤6
		2	20~200	≤9	≤9	≤9	≤9	≤9	≤9	≤9
扭转刚性		1,2	4~200	7	13	31	82	151	440	1,006
最大弯曲力矩 M_{2xB}^2	Nm	1,2	4~200	42.5	125	235	430	1,300	3,064	5,900
容许径向力 F_{2B}^2	N	1,2	4~200	1,080	2,110	2,310	4,800	6,200	5,450	10,600
使用寿命	hr	1,2	4~200	20,000*						
效率 η	%	1	4~20	≥95%						
		2	20~200	≥92%						
重量	kg	1	4~20	1.1	2.1	5.9	10.5	21.9	50.9	85.4
		2	20~200	1.4	1.9	4.5	9.8	20.1	45.4	85.9
使用温度	°C	1,2	4~200	-10°C~+90°C						
润滑		1,2	4~200	合成润滑油脂						
防护等级		1,2	4~200	IP65						
安装方向		1,2	4~200	任意方向						
噪音值 ($n_1=3000\text{rpm}$)	dB	1,2	4~200	≤61	≤63	≤65	≤68	≤70	≤72	≤74

惯量 -MYDR 减速机

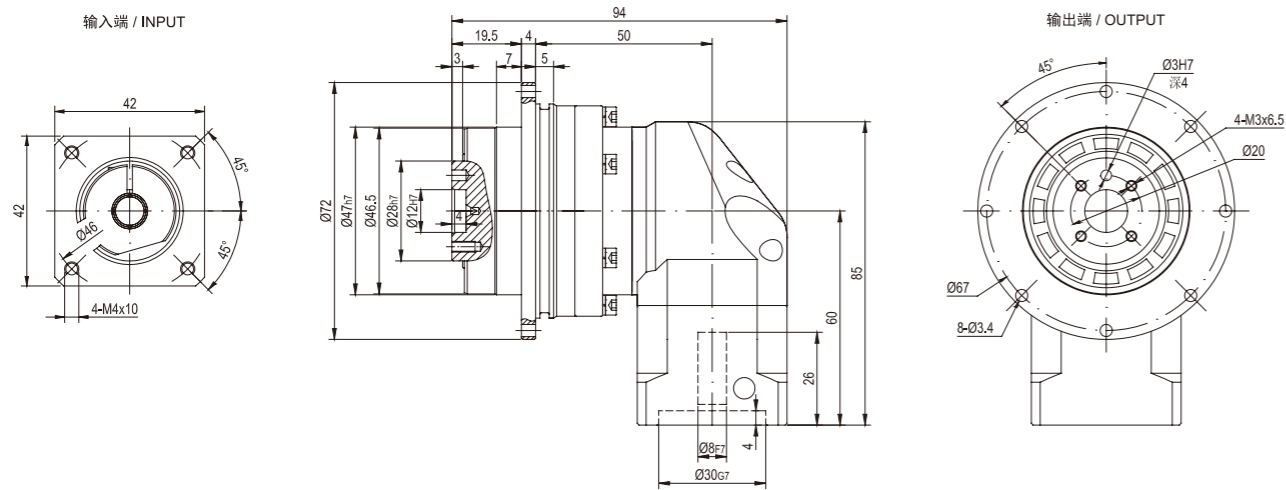
规格	级数	减速比 ¹	MYDR047	MYDR064	MYDR090	MYDR110	MYDR140	MYDR200	MYDR255
转动惯量 J_i	1	4~7	0.09	0.35	2.25	6.84	23.4	68.9	135.4
		8~10	0.09	0.07	1.87	6.25	21.8	65.6	119.8
		14~20	-	0.07	1.87	6.25	21.8	65.6	119.8
	2	20~40	0.09	0.09	0.35	2.25	6.84	23.4	68.9
		50	-	0.09	0.31	1.87	6.25	21.8	65.6
		60	-	0.09	0.35	2.25	6.84	-	-
		70~100	-	0.09	0.31	1.87	6.25	21.8	65.6
		120~200	-	-	0.31	1.87	6.25	21.8	65.6

1. 减速比 ($i=N_{in}/N_{out}$)
* 连续运转降低使用寿命二分之一。

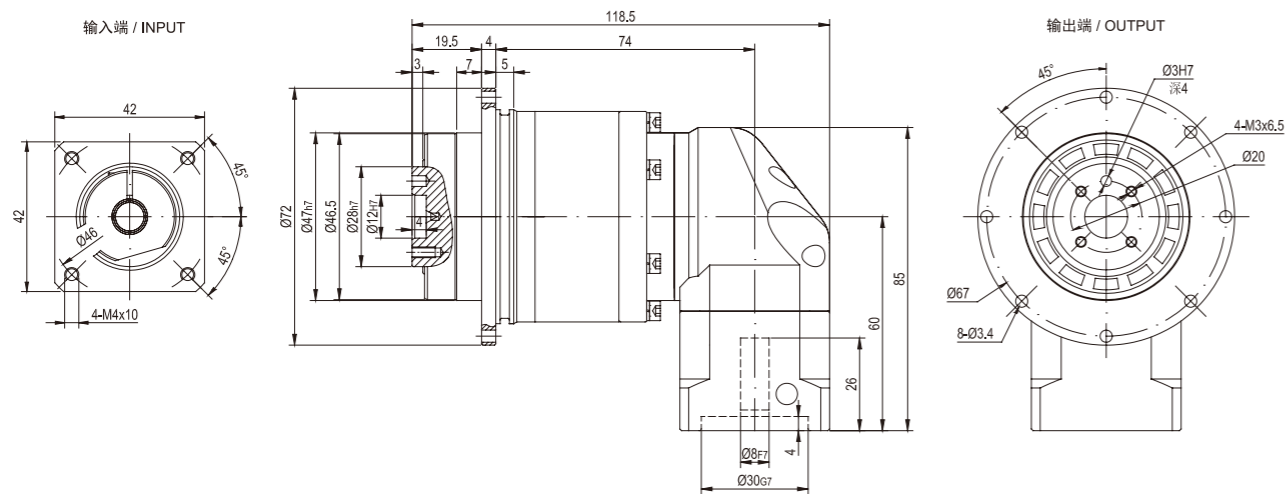
2. 输出转速 100rpm 时，作用于输出轴中心位置。

外形尺寸图 / OUTLINE DIMENSION SHEET

MYDR-047-L1



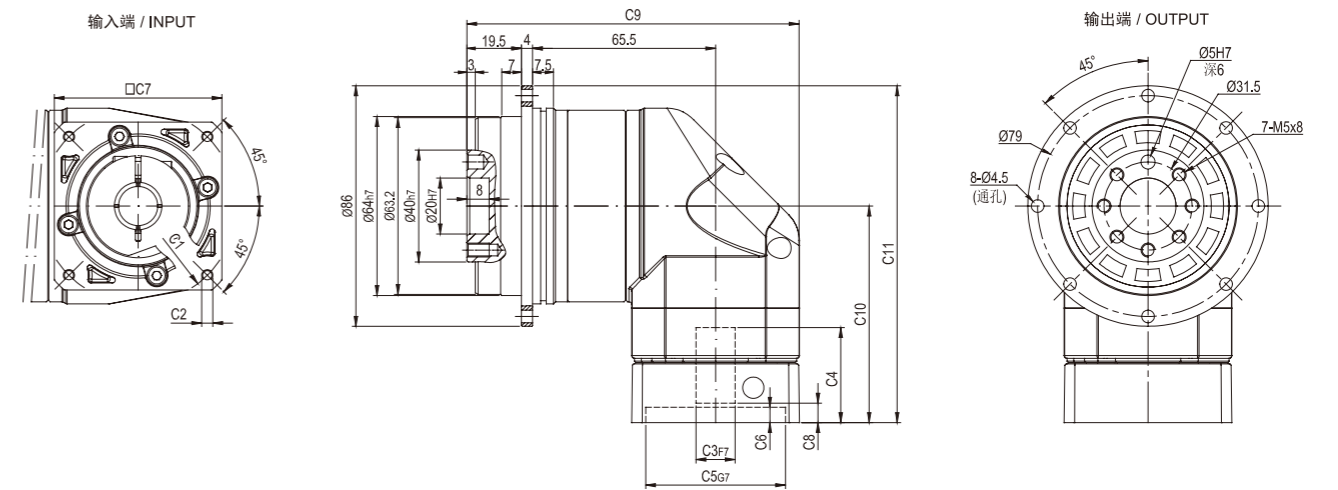
MYDR-047-L2



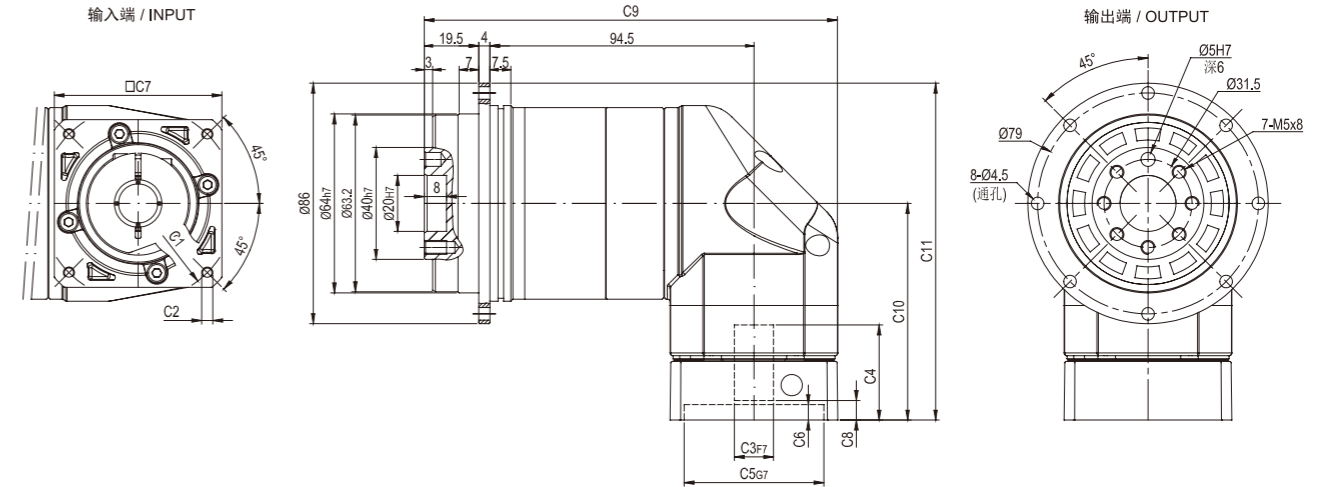
* 输入马达连接板之尺寸,可根据客户要求单独定做。
* The input motor specific dimensions could be customised.

外形尺寸图 / OUTLINE DIMENSION SHEET

MYDR-064-L1



MYDR-064-L2

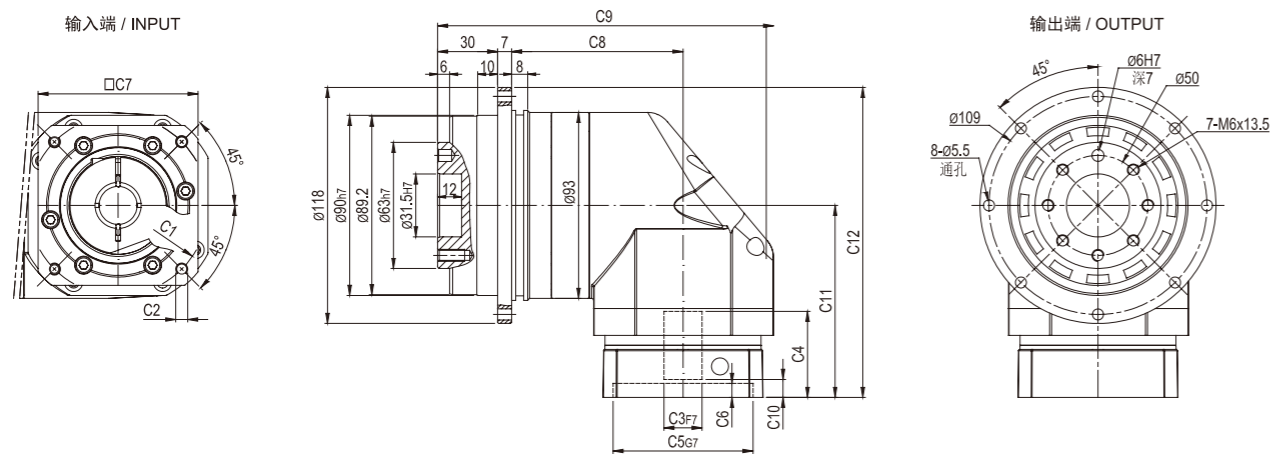


尺寸	C1	C2	C3	C4	C5	C6	C7	C8	C9	C10	C11
MYDR-064-L1	066.7	4-M4x12	08	33	038.1	5.5	60	7	119	77.5	120.5
	070	4-M4x12, 4-M5x12	011,014	33	050	5.5	60	7	119	77.5	120.5
	090	4-M5x15, 4-M6x15	019	42	070	7	80	9	129	87	130
MYDR-064-L2	066.7	4-M4x12	08	33	038.1	5.5	60	7	148	77.5	120.5
	070	4-M4x12, 4-M5x12	011,014	33	050	5.5	60	7	148	77.5	120.5
	090	4-M5x15, 4-M6x15	019	42	070	7	80	9	158	87	130

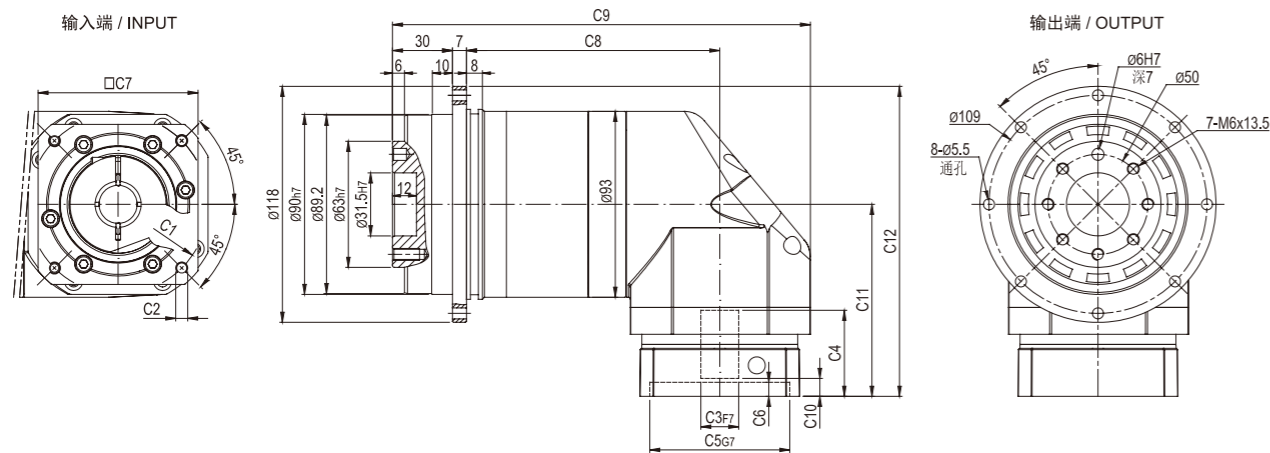
* C1-C7是公制标准马达连接板之尺寸,可根据客户要求单独定做。
* C1-C7are motor(metric standard) specific dimensions, which could be customised.

外形尺寸图 / OUTLINE DIMENSION SHEET

MYDR-090-L1



MYDR-090-L2

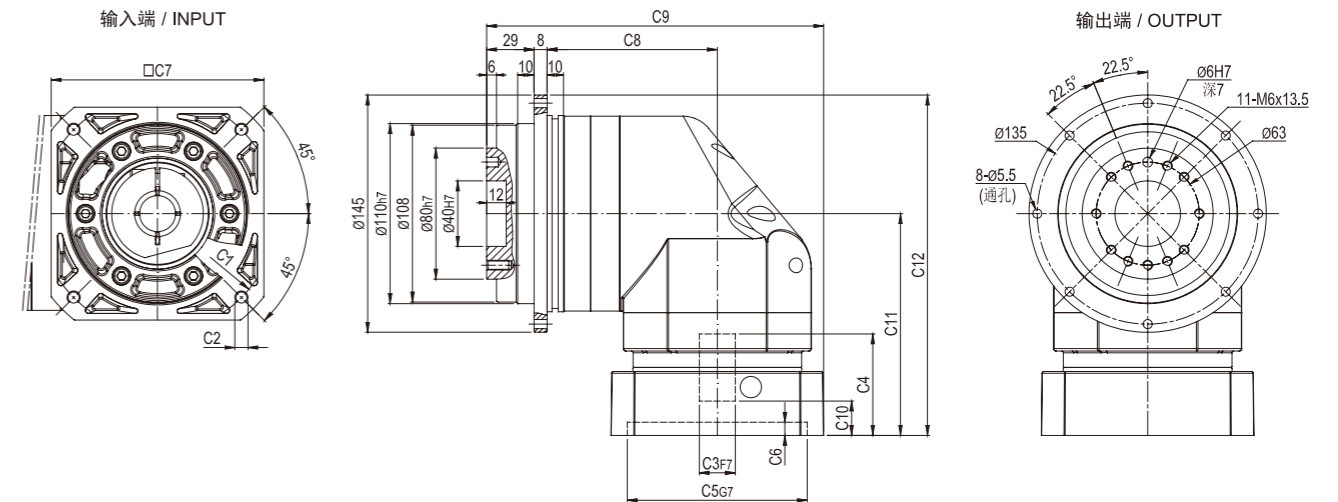


尺寸	C1	C2	C3	C4	C5	C6	C7	C8	C9	C10	C11	C12
MYDR-090-L1	ø90	4-M5x15, 4-M6x15	ø19	44	ø70	7	80	86	168	9	96	155
	ø100	4-M6x15	ø16,ø19	44	ø80	7	86	86	168	9	96	155
	ø115	4-M8x20	ø19,ø22,ø24	56.5	ø95	10	100	86	173	17.5	108.5	167.5
	ø145	4-M8x20	ø19,ø22,ø24	60	ø110	8	130	86	188	21	112	171
MYDR-090-L2	ø90	4-M5x15, 4-M6x15	ø19	44	ø70	7	80	127	209	9	96	155
	ø100	4-M6x15	ø16,ø19	44	ø80	7	86	127	209	9	96	155
	ø115	4-M8x20	ø19,ø22,ø24	56.5	ø95	10	100	127	214	17.5	108.5	167.5
	ø145	4-M8x20	ø19,ø22,ø24	60	ø110	8	130	127	229	21	112	171

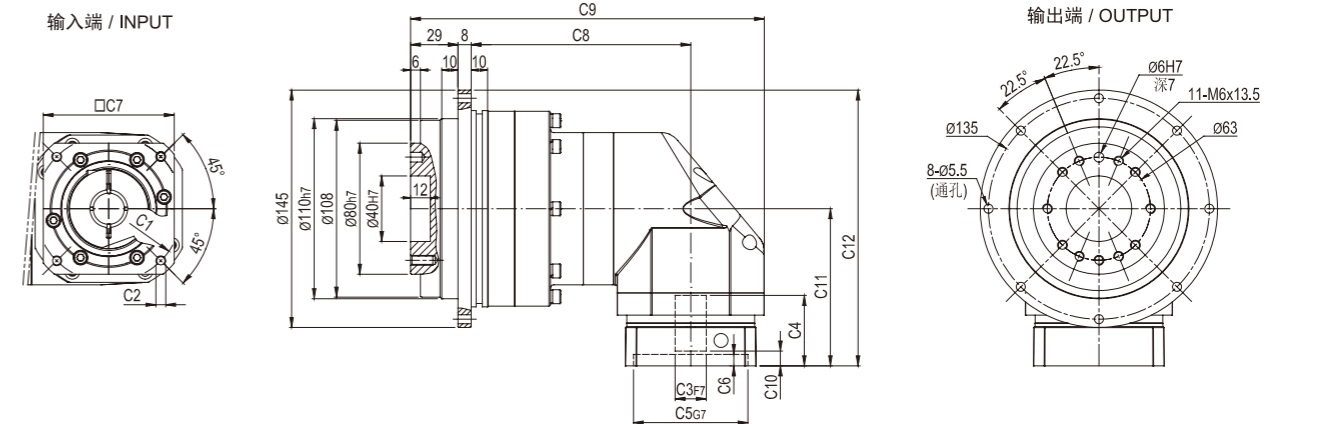
* C1-C7是公制标准马达连接板之尺寸, 可根据客户要求单独定做。
* C1-C7 are motor (metric standard) specific dimensions, which could be customised.

外形尺寸图 / OUTLINE DIMENSION SHEET

MYDR-110-L1



MYDR-110-L2

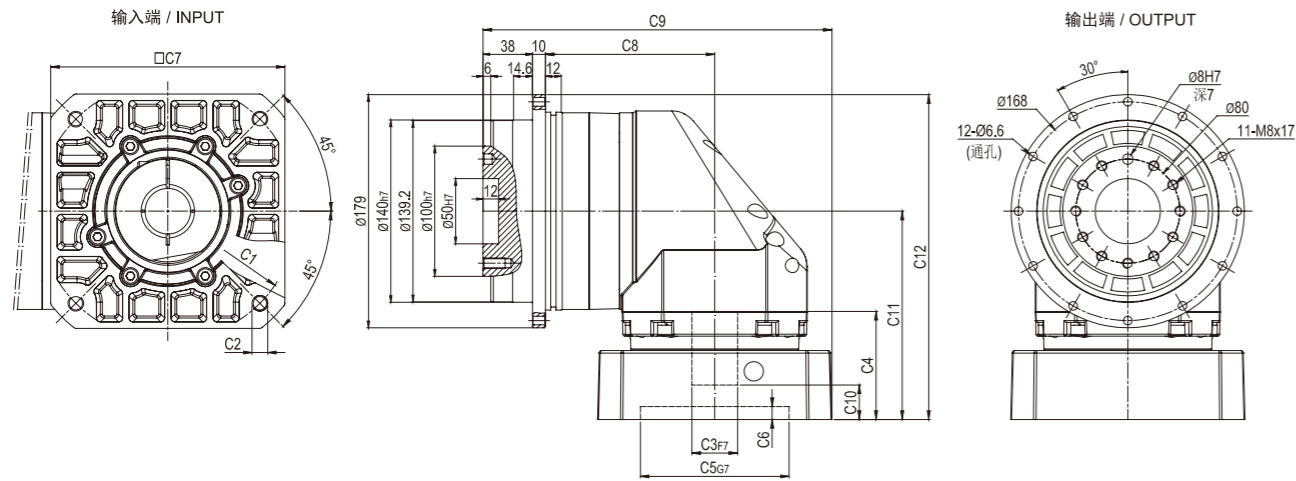


尺寸	C1	C2	C3	C4	C5	C6	C7	C8	C9	C10	C11	C12
MYDR-110-L1	ø145	4-M8x20	ø19,ø22,ø24	64	ø110	8	130	104	206	21	135.5	208
	ø200	4-M12x30	ø35	82	ø114.3	10	180	104	231	28	152.5	225
MYDR-110-L2	ø90	4-M5x15, 4-M6x15	ø19	44	ø70	7	80	134.5	216.5	9	96	168.5
	ø100	4-M6x15	ø16,ø19	44	ø80	7	86	134.5	216.5	9	96	168.5
	ø115	4-M8x20	ø19,ø22,ø24	56.5	ø95	8	100	134.5	221.5	17.5	108.5	181
	ø145	4-M8x20	ø19,ø22,ø24	60	ø110	8	130	134.5	236.5	21	112	184.5

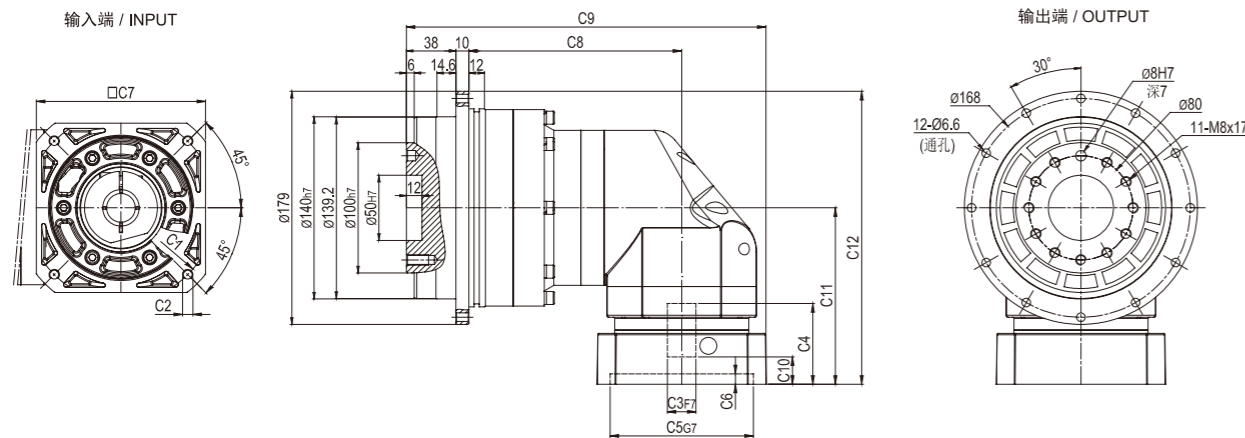
* C1-C7是公制标准马达连接板之尺寸, 可根据客户要求单独定做。
* C1-C7 are motor (metric standard) specific dimensions, which could be customised.

外形尺寸图 / OUTLINE DIMENSION SHEET

MYDR-140-L1



MYDR-140-L2

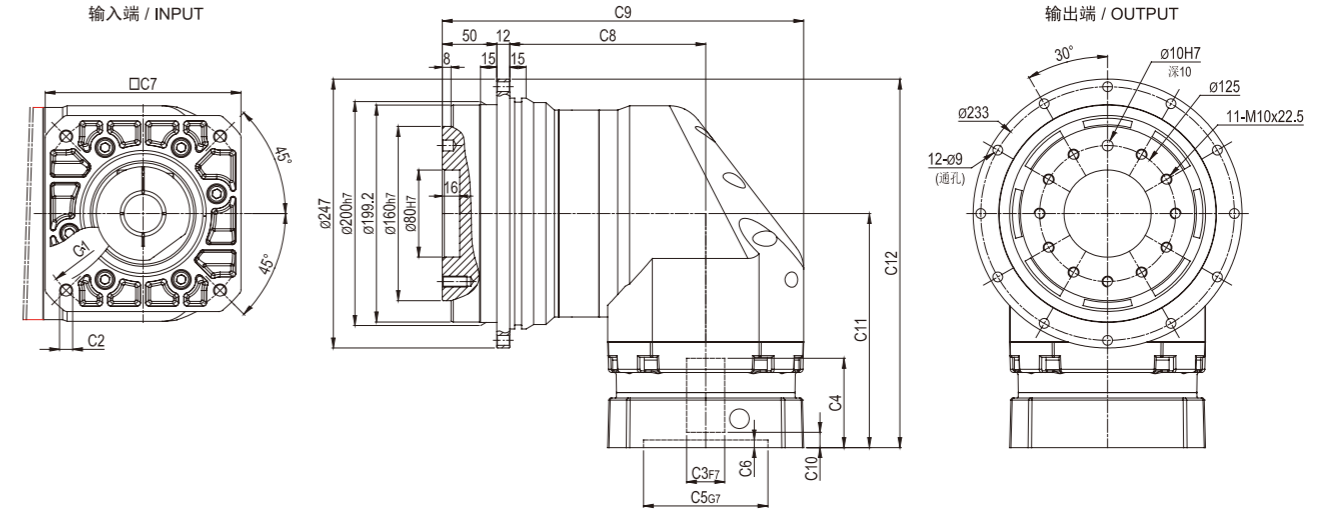


尺寸	C1	C2	C3	C4	C5	C6	C7	C8	C9	C10	C11	C12
MYDR-140-L1	$\phi 145$	4-M8x20	$\phi 22, \phi 24$	72	$\phi 110$	10	130	130.5	249.5	20.5	149	238.5
	$\phi 200$	4-M12x30	$\phi 35$	82	$\phi 114.3$	10	180	130.5	268.5	26.5	160	249.5
MYDR-140-L2	$\phi 145$	4-M8x20	$\phi 19, \phi 22, \phi 24$	64	$\phi 110$	8	130	163.5	276.5	21	135.5	225
	$\phi 200$	4-M12x30	$\phi 35$	82	$\phi 114.3$	10	180	163.5	301.5	28	152.5	242

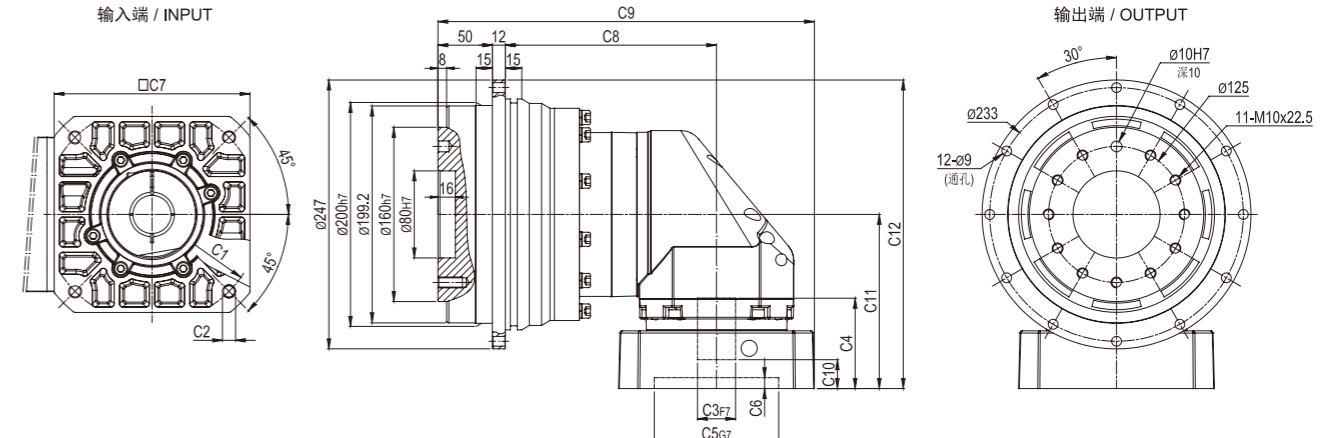
* C1-C7是公制标准马达连接板之尺寸, 可根据客户要求单独定做。
* C1-C7 are motor(metric standard) specific dimensions, which could be customised.

外形尺寸图 / OUTLINE DIMENSION SHEET

MYDR-200-L1



MYDR-200-L2

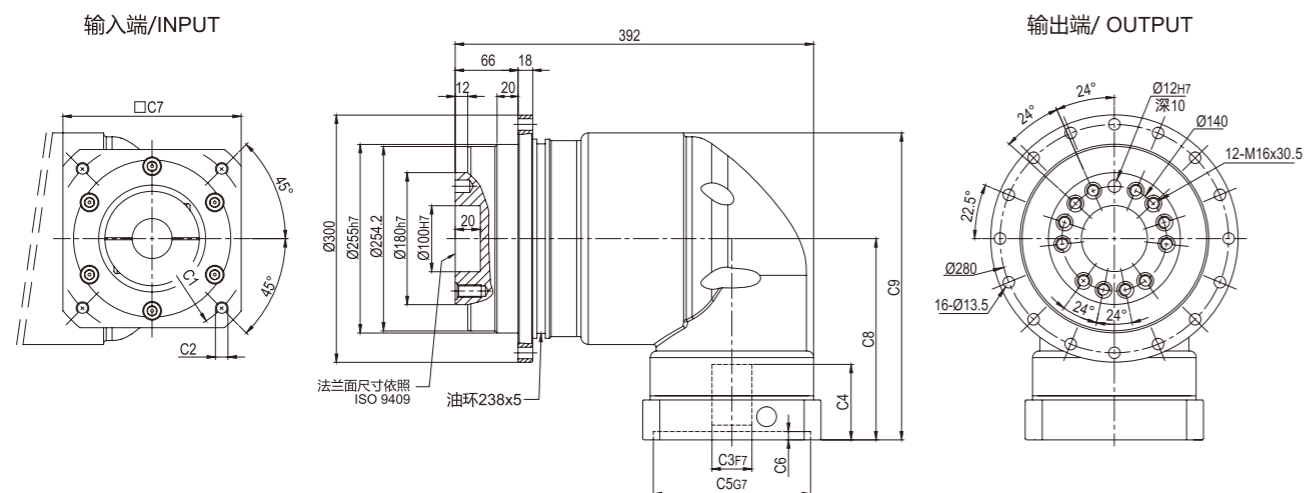


尺寸	C1	C2	C3	C4	C5	C6	C7	C8	C9	C10	C11	C12
MYDR-200-L1	$\phi 200$	4-M12x30	$\phi 35$	85	$\phi 114.3$	7	180	180	332	14	215	338.5
	$\phi 235$	4-M12x30	$\phi 42$	120	$\phi 200$	10	220	180	352	44	253	376.5
MYDR-200-L2	$\phi 145$	4-M8x20	$\phi 22, \phi 24$	72	$\phi 110$	10	130	194	217	20.5	149	272.5
	$\phi 200$	4-M12x30	$\phi 35$	82	$\phi 114.3$	10	180	194	346	26.5	160	283.5

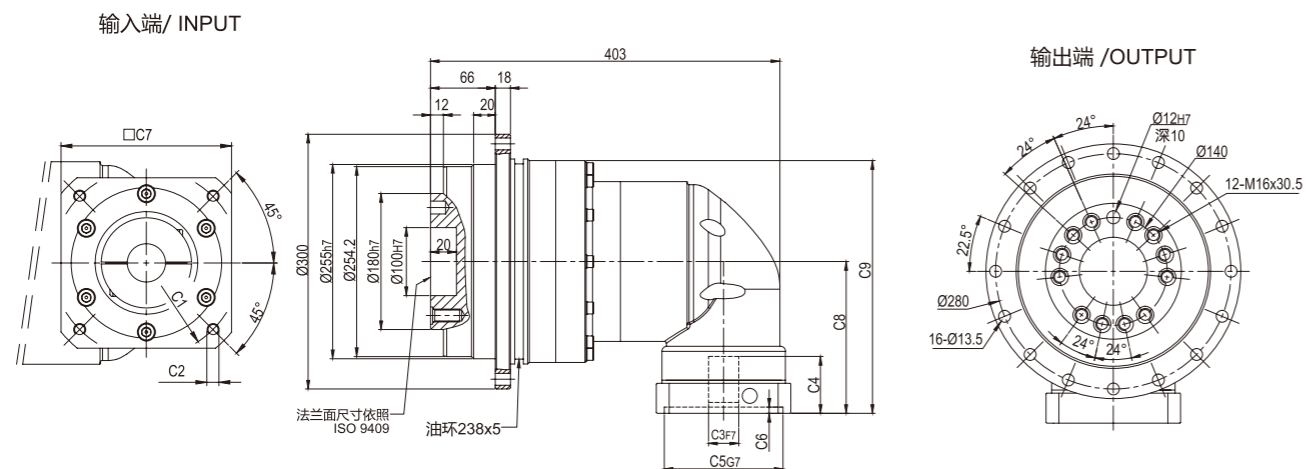
* C1-C7是公制标准马达连接板之尺寸, 可根据客户要求单独定做。
* C1-C7 are motor(metric standard) specific dimensions, which could be customised.

外形尺寸图 / OUTLINE DIMENSION SHEET

MYDR-255-L1



MYDR-255-L2



尺寸	C1	C2	C3	C4	C5	C6	C7	C8	C9
MYDR-255-L1	Ø235	4-M12x28	Ø38, Ø42	116	Ø200	6	220	268.5	398.5
MYDR-255-L2	Ø200	4-M12x28	Ø35	85	Ø114.3	6	180	213.5	340
	Ø215	4-M12x28	Ø38	85	Ø180	6	192	213.5	340

* C1~C7是公制标准马达连接板之尺寸,可根据客户要求单独定做。
 * C1~C7are motor(metric standard) specific dimensions, which could be customised.