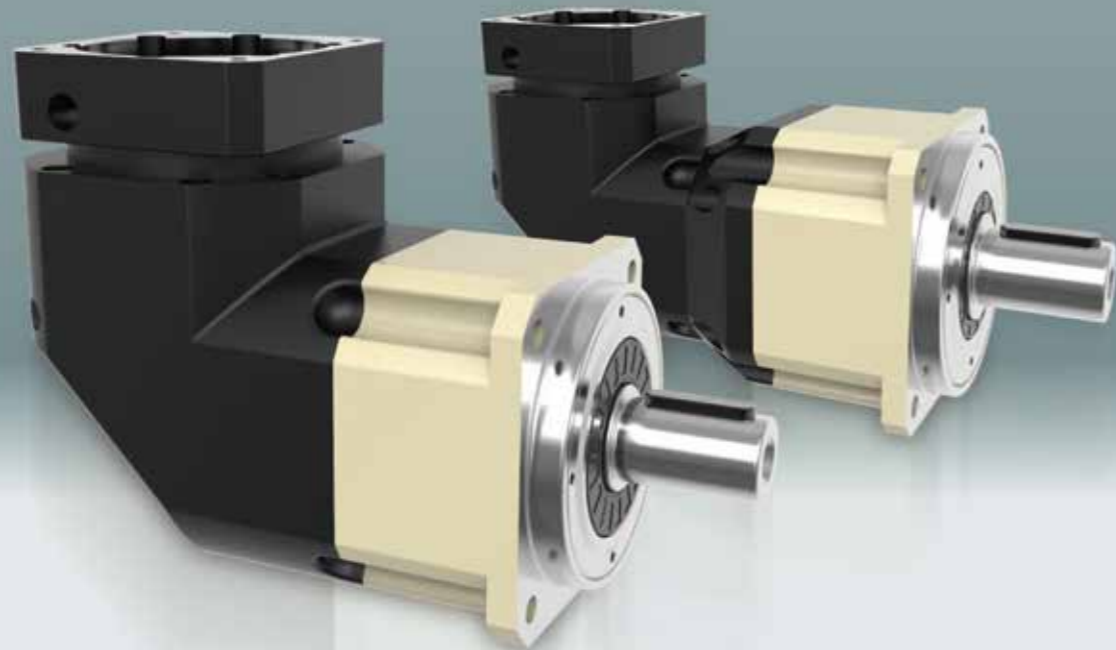


# MYAR SERIES

精密行星减速机



## 型号说明 MODEL ILLUMINATE

**MYAR090 - 10 - S2 - P2 / 马达**

减速机型式：

MYAR042/MYAR060/MYAR090  
MYAR115/MYAR142/MYAR180  
MYAR220

输出轴型式选择：S1：平滑直轴  
S2：附键直轴

马达型号：  
马达制造及型号

减速比：单级(L1)：3,4,5,6,7,8,10,14,20  
双级(L2)：12,15,20,25,30,35,40,50,60,70,80,100,120,140,160,200

背隙：P0：超精密背隙  
P1：精密背隙  
P2：标准背隙

选型范例：MYAR090-10-S2-P2/MHMD-082G1U

创新 + 质量 + 服务

## 性能 -MYAR 减速机

规格	级数	减速比 <sup>1</sup>	MYAR042	MYAR060	MYAR090	MYAR115	MYAR142	MYAR180	MYAR220	
额定输出力矩 $T_{2N}$	1	3	20	55	130	208	342	588	1,140	
		4	19	50	140	290	542	1,050	1,700	
		5	22	60	160	330	650	1,200	2,000	
		6	20	55	150	310	600	1,100	1,900	
		7	19	50	140	300	550	1,100	1,800	
		8	17	50	140	290	542	1,000	1,600	
		10	14	60	160	330	650	520	1,220	
		14	-	50	140	300	550	1,100	1,800	
		20	-	40	100	230	450	520	1,220	
		12	-	55	130	208	342	588	1,140	
	2	15	20	55	130	208	342	588	1,140	
		20	19	50	140	290	542	1,050	1,700	
		25	22	60	160	330	650	1,200	2,000	
		30	22	55	130	208	342	1,200	2,000	
		35	22	60	160	330	650	1,200	2,000	
		40	22	50	140	290	542	1,200	2,000	
		50	22	60	160	330	650	1,200	2,000	
		60	22	55	150	310	600	1,200	2,000	
		70	22	60	160	330	650	1,200	2,000	
		80	22	50	140	290	542	1,200	2,000	
100	22	60	160	330	650	1,200	2,000			
120	-	-	150	310	600	1,100	1,900			
140	-	-	140	300	550	1,100	1,800			
160	-	-	120	260	500	1,000	1,600			
200	-	-	100	230	450	520	1,220			
最大输出力矩 $T_{2B}$	Nm	1,2	3~200	3倍额定输出力矩						
额定输入转速 $n_1$	rpm	1,2	3~200	5,000	5,000	4,000	4,000	3,000	3,000	2,000
最大输入转速 $n_{1B}$	rpm	1,2	3~200	10,000	10,000	8,000	8,000	6,000	6,000	4,000
超精密背隙 P0	arcmin	1	3~20	-	-	≤2	≤2	≤2	≤2	≤2
		2	12~200	-	-	≤4	≤4	≤4	≤4	≤4
精密背隙 P1	arcmin	1	3~20	≤4	≤4	≤4	≤4	≤4	≤4	≤4
		2	12~200	≤7	≤7	≤7	≤7	≤7	≤7	≤7
标准背隙 P2	arcmin	1	3~20	≤6	≤6	≤6	≤6	≤6	≤6	≤6
		2	12~200	≤9	≤9	≤9	≤9	≤9	≤9	≤9
扭转刚性	Nm/arcmin	1,2	3~200	3	7	14	25	50	145	225
容许径向力 $F_{2rB}^2$	N	1,2	3~200	780	1,530	3,250	6,700	9,400	14,500	50,000
容许轴向力 $F_{2a1B}^2$	N	1,2	3~200	350	630	1,300	3,000	4,000	6,200	35,000
容许轴向力 $F_{2a2B}^2$	N	1,2	3~200	390	765	1,625	3,350	4,700	7,250	25,000
使用寿命	hr	1,2	3~200	20,000*						
效率 $\eta$	%	1	3~20	≤95%						
		2	12~200	≤92%						
重量	kg	1	3~20	0.9	2.1	6.4	13	24.5	51	83
使用温度	°C	1,2	3~200	1.2	2.5	7.8	14.2	27.5	54	95
润滑		1,2	3~200	合成润滑油						
防护等级		1,2	3~200	IP65						
安装方向		1,2	3~200	任意方向						
噪音值 ( $n_1=3000\text{rpm}$ )	dB	1,2	3~200	≤61	≤63	≤65	≤68	≤70	≤72	≤74

## 惯量 -MYAR 减速机

规格	级数	减速比 <sup>1</sup>	MYAR042	MYAR060	MYAR090	MYAR115	MYAR142	MYAR180	MYAR220
转动惯量 $J_1$	1	3~7	0.09	0.35	2.25	6.84	23.4	68.9	135.4
		8~10	0.09	0.07	1.87	6.25	21.8	65.6	119.8
		14~20	-	0.07	1.87	6.25	21.8	65.6	119.8
	2	12~40	0.09	0.09	0.35	2.25	6.84	23.4	68.9
		50	0.09	0.09	0.31	1.87	6.25	21.8	65.6
		60	0.09	0.09	0.35	2.25	6.84	23.4	68.9
		70~100	0.09	0.09	0.31	1.87	6.25	21.8	65.6
		120~200	-	-	0.31	1.87	6.25	21.8	65.6

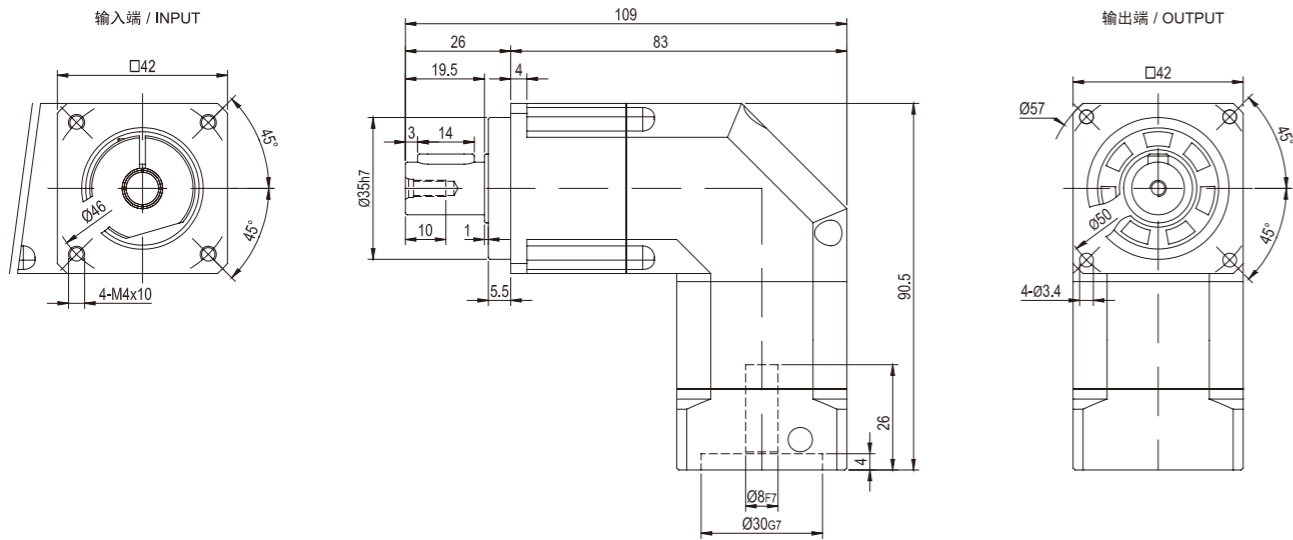
1. 减速比 (  $i=N_{in}/N_{out}$  )

\* 连续运转降低使用寿命二分之一。

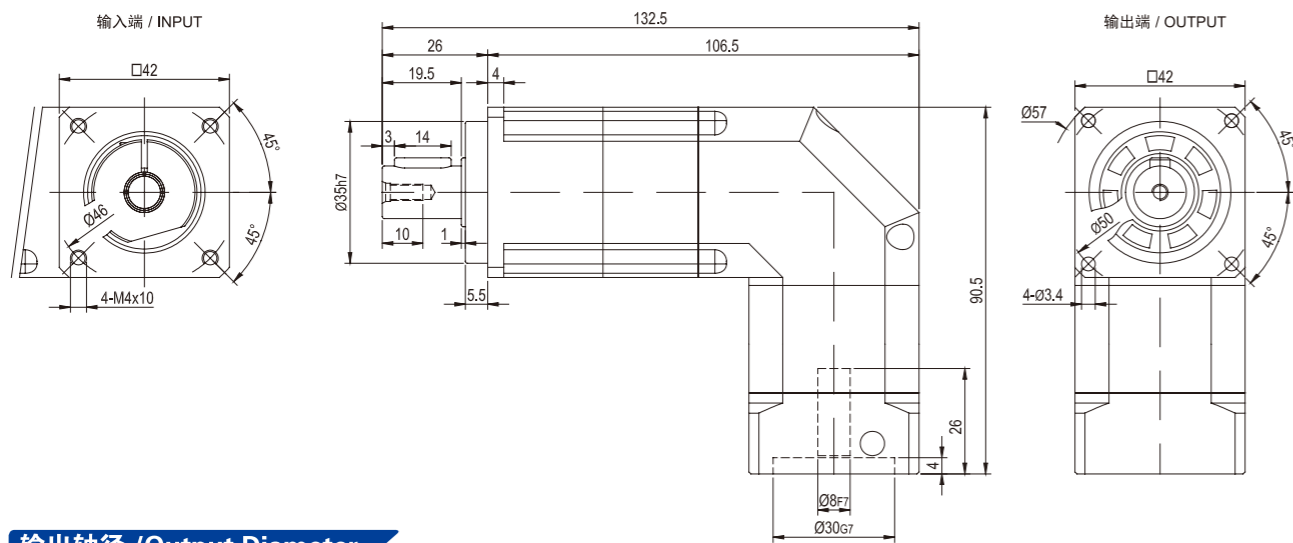
2. 输出转速 100rpm 时，作用于输出轴中心位置。

外形尺寸图 / OUTLINE DIMENSION SHEET

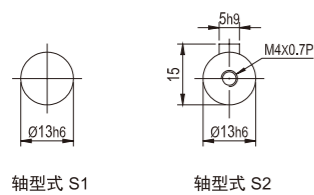
MYAR-042-L1



MYAR-042-L2



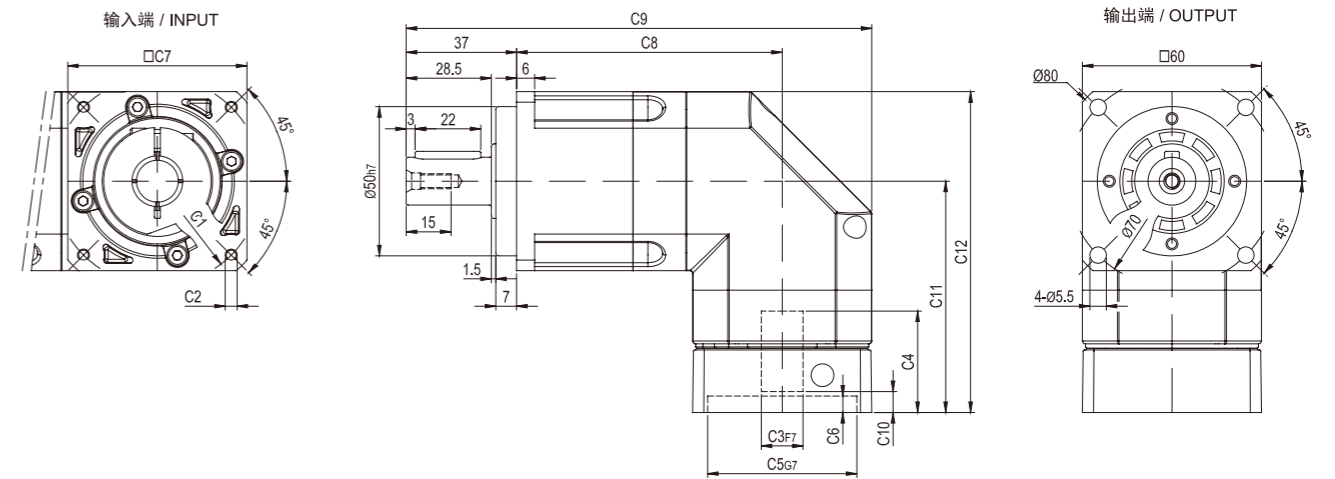
输出轴径 / Output Diameter



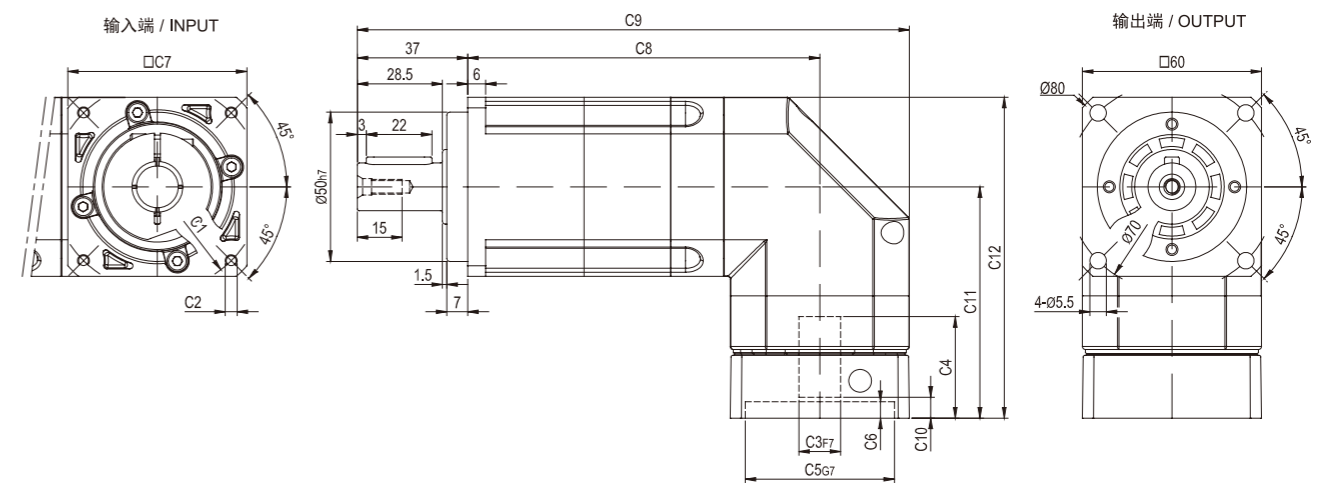
\* 输入马达连接板之尺寸,可根据客户要求单独定做。  
\* The input motor specific dimensions could be customised.

外形尺寸图 / OUTLINE DIMENSION SHEET

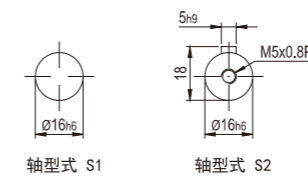
MYAR-060-L1



MYAR-060-L2



输出轴径 / Output Diameter

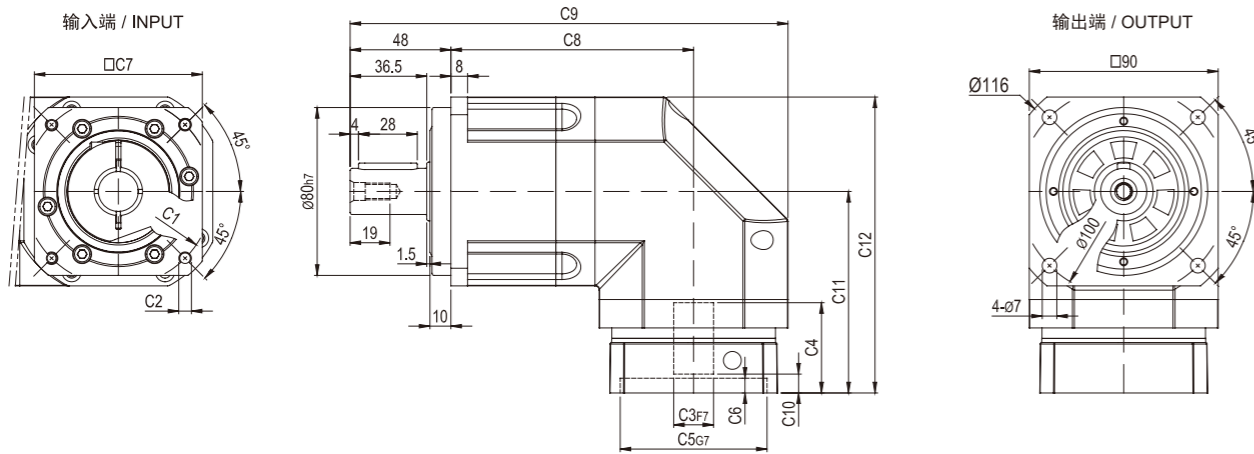


尺寸	C1	C2	C3	C4	C5	C6	C7	C8	C9	C10	C11	C12
MYAR-060-L1	Ø66.7	4-M4x12	Ø8	33	Ø38.1	5.5	60	89	156	7	77.5	107.5
	Ø70	4-M4x12, 4-M5x12	Ø11, Ø14	33	Ø50	5.5	60	89	156	7	77.5	107.5
	Ø90	4-M5x15, 4-M6x15	Ø19	42	Ø70	7	80	89	166	9	87	117
MYAR-060-L2	Ø66.7	4-M4x12	Ø8	33	Ø38.1	5.5	60	118	185	7	77.5	107.5
	Ø70	4-M4x12, 4-M5x12	Ø11, Ø14	33	Ø50	5.5	60	118	185	7	77.5	107.5
	Ø90	4-M5x15, 4-M6x15	Ø19	42	Ø70	7	80	118	195	9	87	117

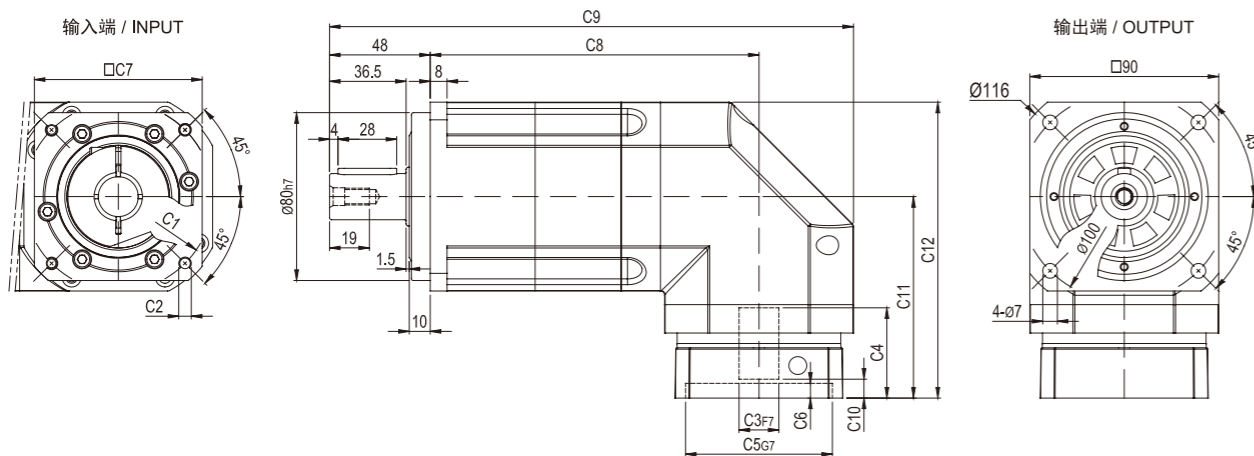
\* C1-C7是公制标准马达连接板之尺寸,可根据客户要求单独定做。  
\* C1-C7are motor(metric standard) specific dimensions, which could be customised.

外形尺寸图 / OUTLINE DIMENSION SHEET

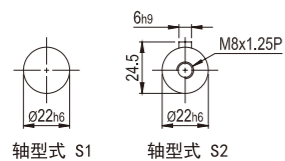
MYAR-090-L1



MYAR-090-L2



输出轴径 / Output Diameter

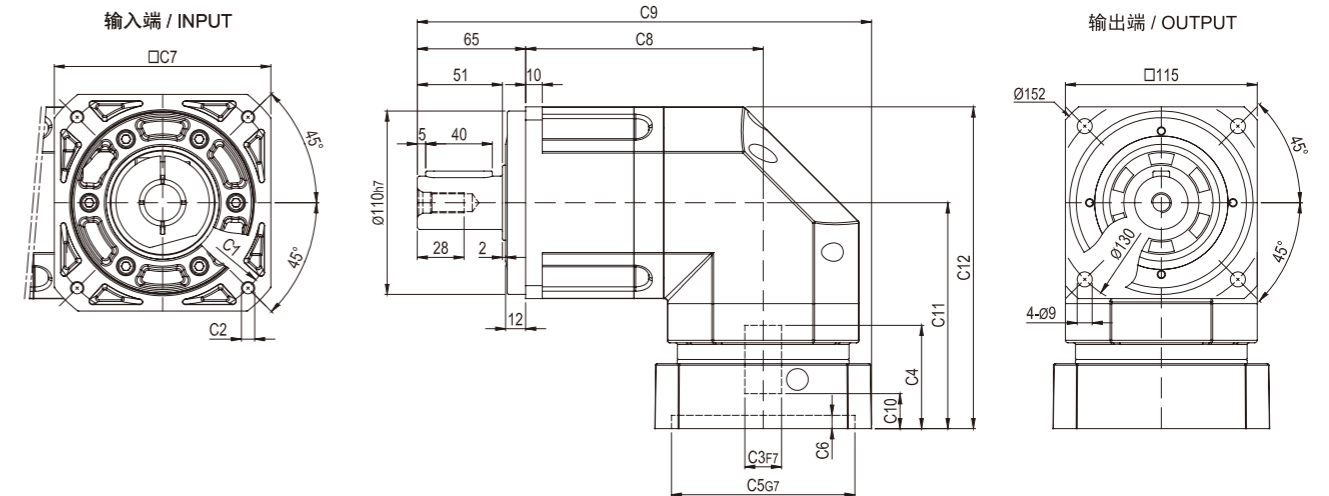


尺寸	C1	C2	C3	C4	C5	C6	C7	C8	C9	C10	C11	C12
MYAR-090-L1	Ø90	4-M5x15, 4-M6x15	Ø19	44	Ø70	7	80	116	209	9	96	141
	Ø100	4-M6x15	Ø16, Ø19	44	Ø80	7	86	116	209	9	96	141
	Ø115	4-M8x20	Ø19, Ø22, Ø24	56.5	Ø95	10	100	116	214	17.5	108.5	153.5
MYAR-090-L2	Ø90	4-M5x15, 4-M6x15	Ø19	44	Ø70	7	80	157	250	9	96	141
	Ø100	4-M6x15	Ø16, Ø19	44	Ø80	7	86	157	250	9	96	141
	Ø115	4-M8x20	Ø19, Ø22, Ø24	56.5	Ø95	10	100	157	255	17.5	108.5	153.5
	Ø145	4-M8x20	Ø19, Ø22, Ø24	60	Ø110	8	130	157	270	21	112	157

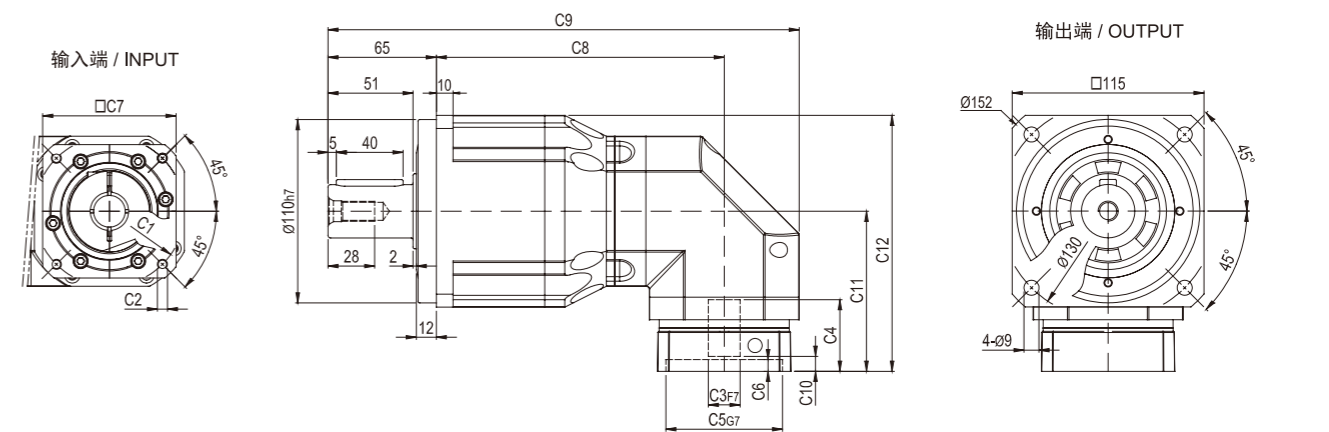
\* C1-C7是公制标准马达连接板之尺寸, 可根据客户要求单独定做。  
\* C1-C7 are motor (metric standard) specific dimensions, which could be customised.

外形尺寸图 / OUTLINE DIMENSION SHEET

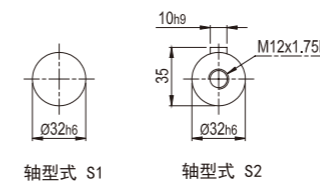
MYAR-115-L1



MYAR-115-L2



输出轴径 / Output Diameter

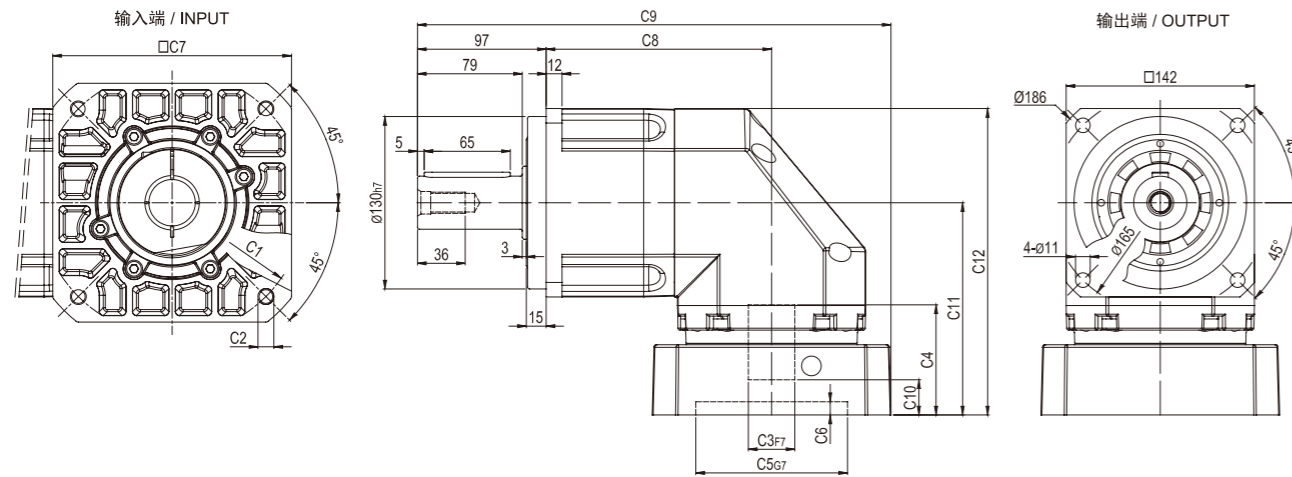


尺寸	C1	C2	C3	C4	C5	C6	C7	C8	C9	C10	C11	C12
MYAR-115-L1	Ø145	4-M8x20	Ø19, Ø22, Ø24	64	Ø110	8	130	142.5	272.5	21	135.5	193
	Ø200	4-M12x30	Ø35	82	Ø114.3	10	180	142.5	297.5	28	152.5	210
MYAR-115-L2	Ø90	4-M5x15, 4-M6x15	Ø19	44	Ø70	7	80	173	283	9	96	153.5
	Ø100	4-M6x15	Ø16, Ø19	44	Ø80	7	86	173	283	9	96	153.5
	Ø115	4-M8x20	Ø19, Ø22, Ø24	56.5	Ø95	10	100	173	288	17.5	108.5	166
	Ø145	4-M8x20	Ø19, Ø22, Ø24	60	Ø110	8	130	173	303	21	112	169.5

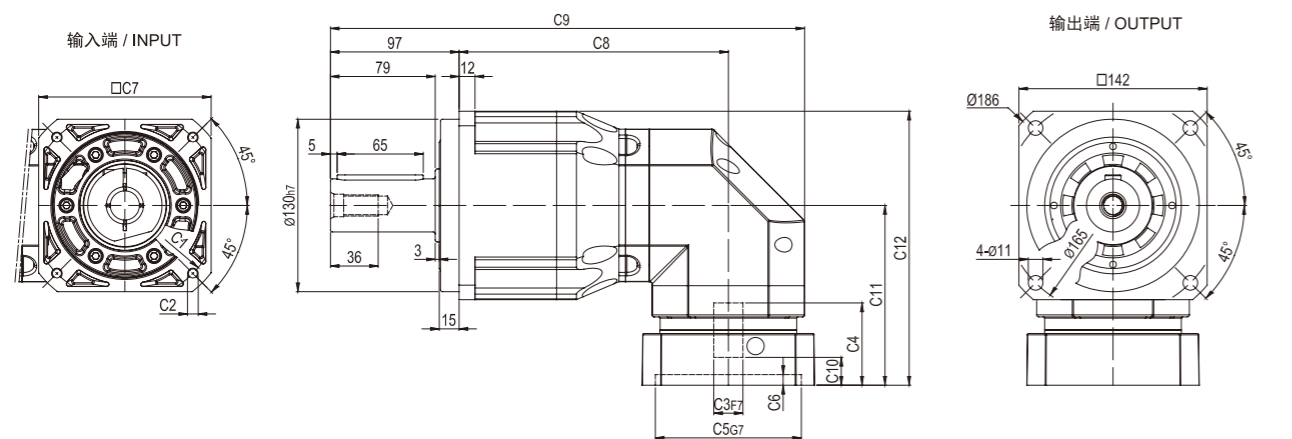
\* C1-C7是公制标准马达连接板之尺寸, 可根据客户要求单独定做。  
\* C1-C7 are motor (metric standard) specific dimensions, which could be customised.

外形尺寸图 / OUTLINE DIMENSION SHEET

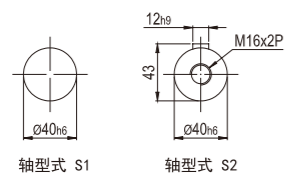
MYAR-142-L1



MYAR-142-L2



输出轴径 / Output Diameter

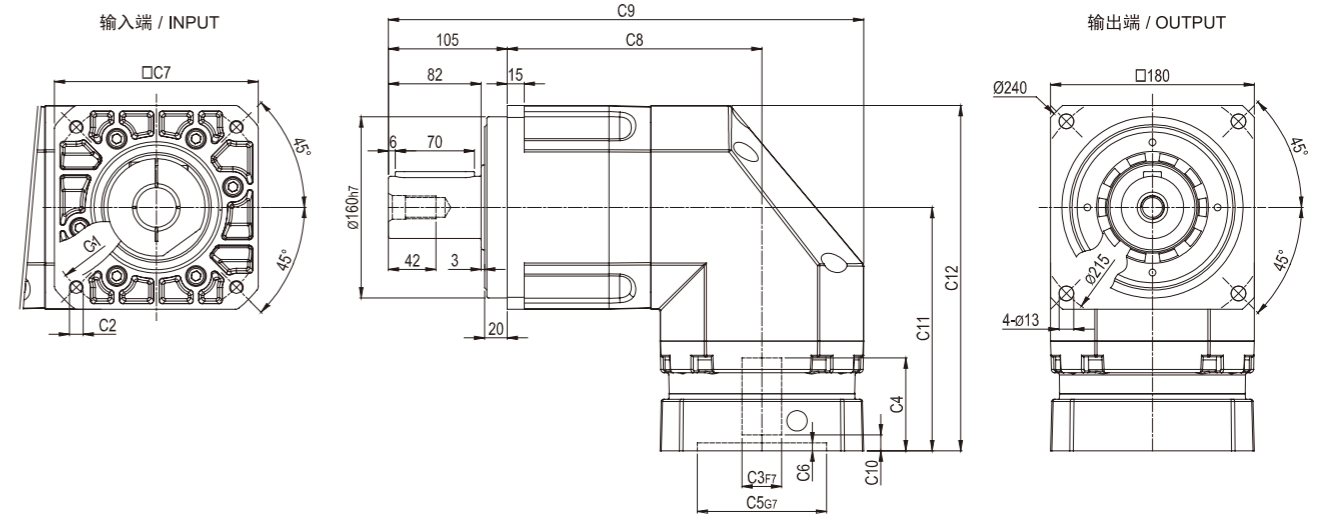


尺寸	C1	C2	C3	C4	C5	C6	C7	C8	C9	C10	C11	C12
MYAR-142-L1	Ø145	4-M8x20	Ø22,Ø24	72	Ø110	10	130	170	338	20.5	149	220
	Ø200	4-M12x30	Ø35	82	Ø114.3	10	180	170	357	26.5	160	231
MYAR-142-L2	Ø145	4-M8x20	Ø19,Ø22,Ø24	64	Ø110	8	130	203	365	21	135.5	206.5
	Ø200	4-M12x30	Ø35	82	Ø114.3	10	180	203	390	28	152.5	223.5

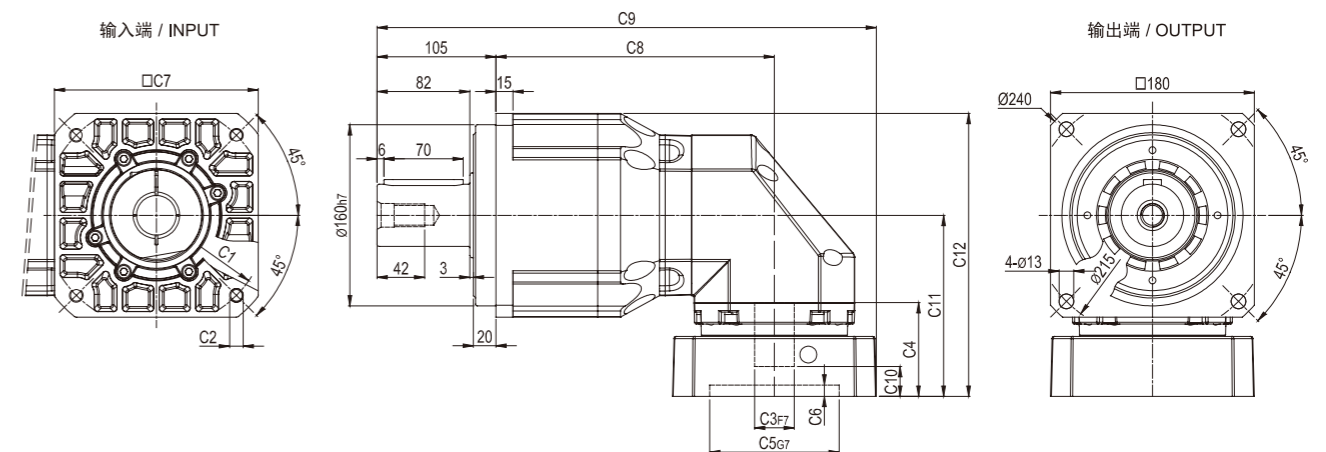
\* C1-C7是公制标准马达连接板之尺寸, 可根据客户要求单独定做。  
\* C1-C7 are motor(metric standard) specific dimensions, which could be customised.

外形尺寸图 / OUTLINE DIMENSION SHEET

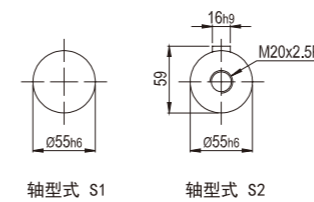
MYAR-180-L1



MYAR-180-L2



输出轴径 / Output Diameter

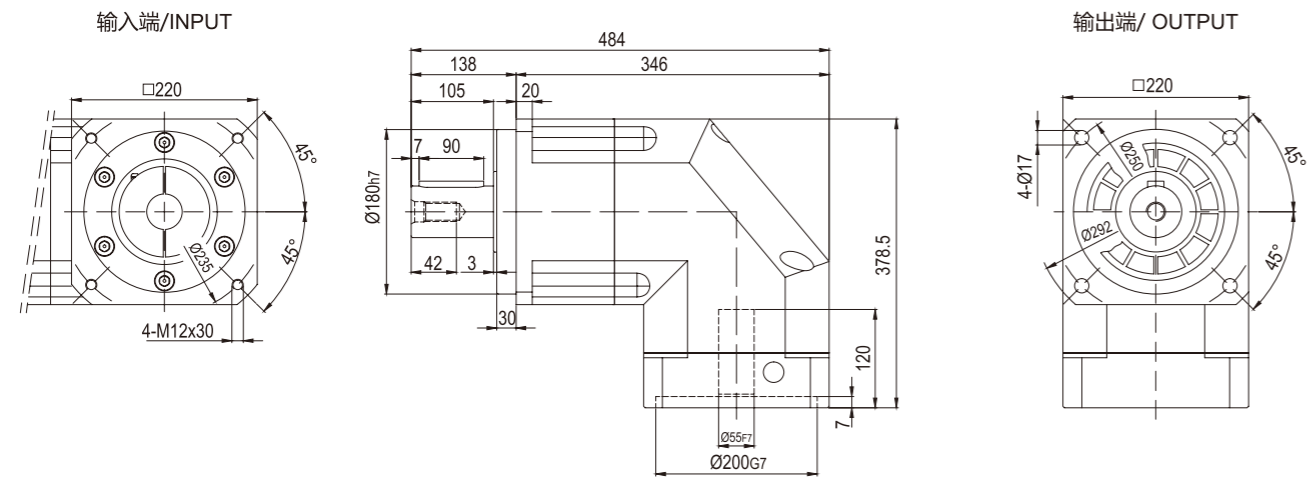


尺寸	C1	C2	C3	C4	C5	C6	C7	C8	C9	C10	C11	C12
MYAR-180-L1	Ø200	4-M12x30	Ø35	85	Ø114.3	7	180	225	420	14	215	305
	Ø235	4-M12x30	Ø42	120	Ø200	10	220	225	440	44	253	343
MYAR-180-L2	Ø145	4-M8x20	Ø22,Ø24	72	Ø110	10	130	246	422	20.5	149	239
	Ø200	4-M12x30	Ø35	82	Ø114.3	10	180	246	441	26.5	160	250

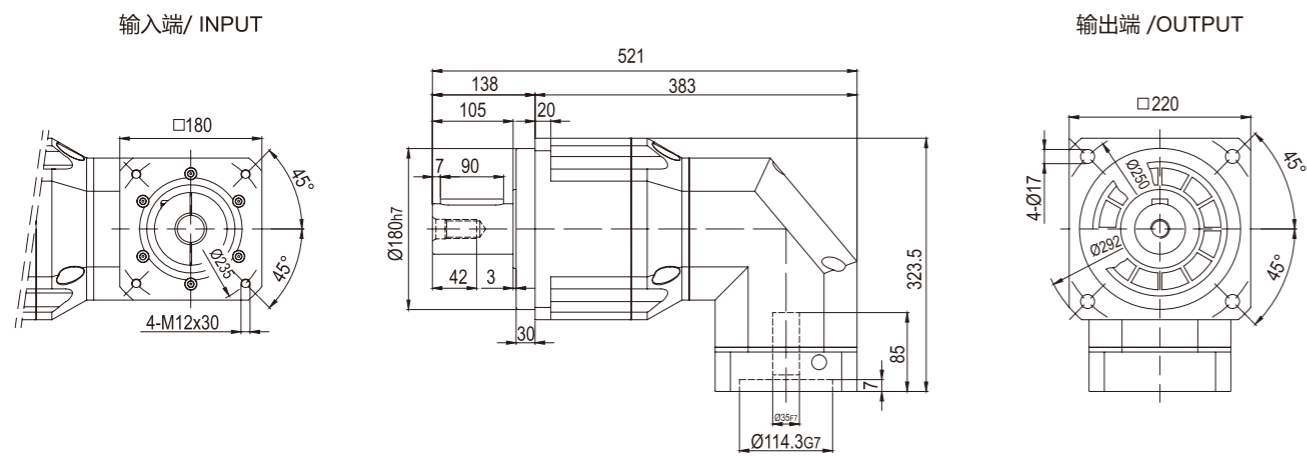
\* C1-C7是公制标准马达连接板之尺寸, 可根据客户要求单独定做。  
\* C1-C7 are motor(metric standard) specific dimensions, which could be customised.

外形尺寸图 / OUTLINE DIMENSION SHEET

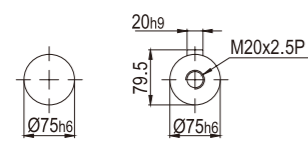
MYAR-220-L1



MYAR-220-L2



输出轴径 / Output Diameter



轴型式 S1 轴型式 S2

\*输入马达连接板之尺寸,可根据客户要求单独定做。  
\*The input motor specific dimensions could be customised.